



4 Portland Close, Platt Bridge

£200,000 Freehold

Three bedroom semi detached • Large private garden with stunning views • Modern family bathroom • Open plan kitchen/diner • Driveway • Council tax band-B • Tenure-Freehold • solar panels and the hot tub are included in the sale

Charming 3-bed semi-detached on Portland Close, Platt Bridge. Garage, driveway, cosy lounge, open plan kitchen diner, conservatory, private garden with canal views. Well-appointed bedrooms, family bathroom. EPC-B. Ready to be your haven in Wigan.

Council Tax band: B

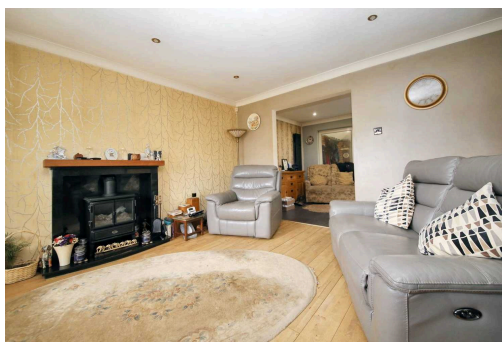
Tenure: Freehold

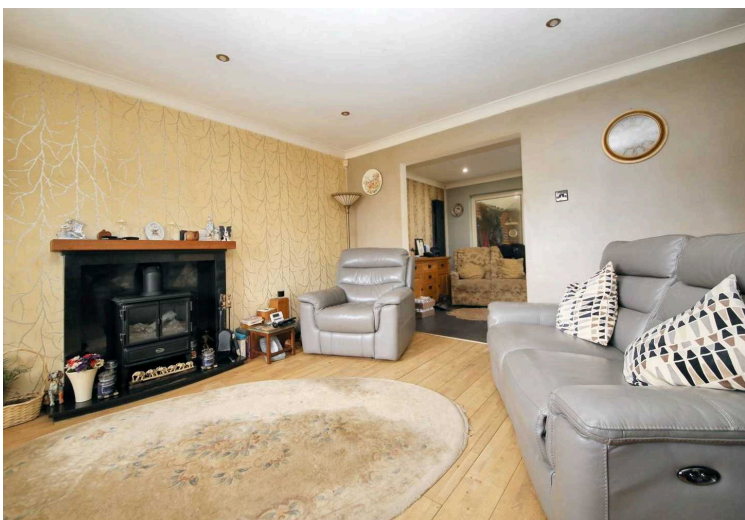
EPC Energy Efficiency Rating: B

EPC Environmental Impact Rating: G

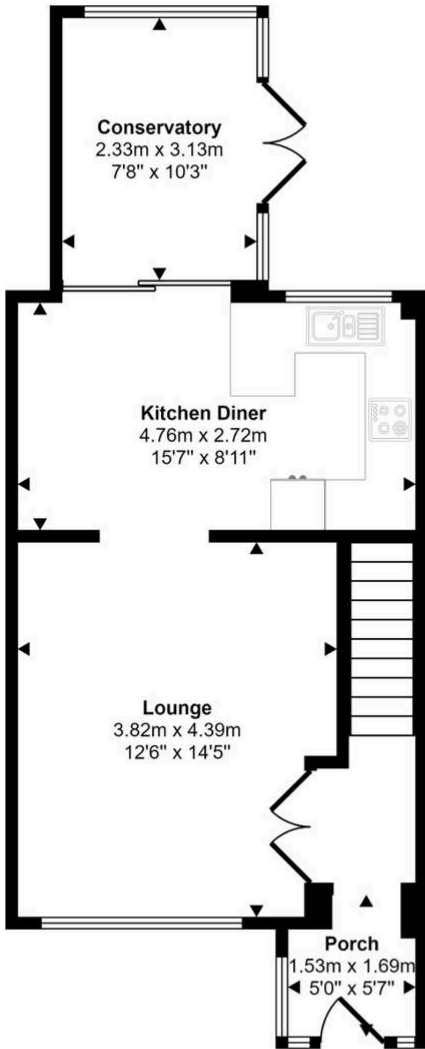


- Three bedroom semi detached
- Large private garden with stunning views
- Modern family bathroom
- Open plan kitchen/diner
- Driveway
- Council tax band-B
- Tenure-Freehold
- solar panels and the hot tub are included in the sale

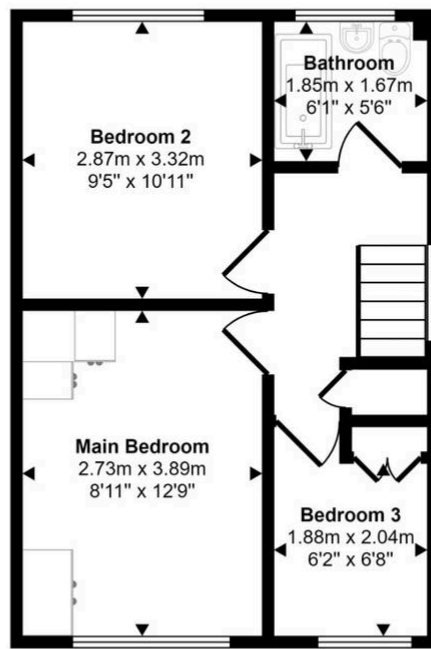




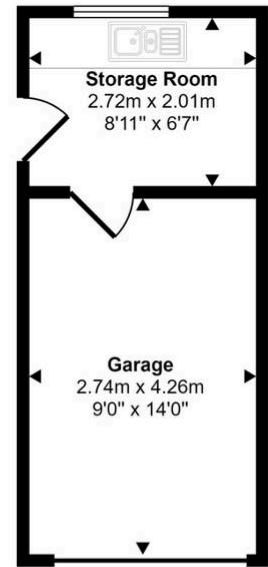
Approx Gross Internal Area
98 sq m / 1054 sq ft



Ground Floor
Approx 45 sq m / 484 sq ft



First Floor
Approx 35 sq m / 380 sq ft



Garage/Storage
Approx 18 sq m / 189 sq ft

This floorplan is only for illustrative purposes and is not to scale. Measurements of rooms, doors, windows, and any items are approximate and no responsibility is taken for any error, omission or mis-statement. Icons of items such as bathroom suites are representations only and may not look like the real items. Made with Made Snappy 360.

You can include any text here. The text can be modified upon generating your brochure.