



25 Derwent Road, Orrell

£190,000 Leasehold

Detached two bed bungalow • Large open plan lounge diner • Kitchen with ample storage • Family shower room
• Large garden to the rear • Drive to the side of the property • Great potential with modernisation • Council tax
band - C • LEASEHOLD

Detached two-bed bungalow in sought-after location with potential for modernisation. Spacious lounge diner, well-equipped kitchen, two bedrooms, and family shower room. Large rear garden, front garden, long drive. Exciting project to create dream home in tranquil setting.
Council Tax band: C

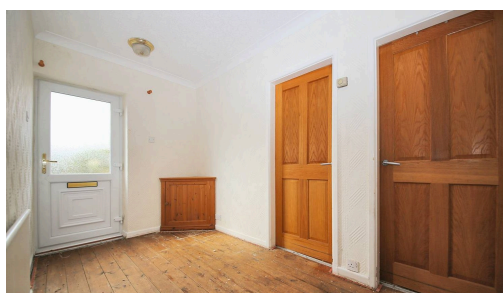
Tenure: Leasehold

EPC Energy Efficiency Rating: D

EPC Environmental Impact Rating:

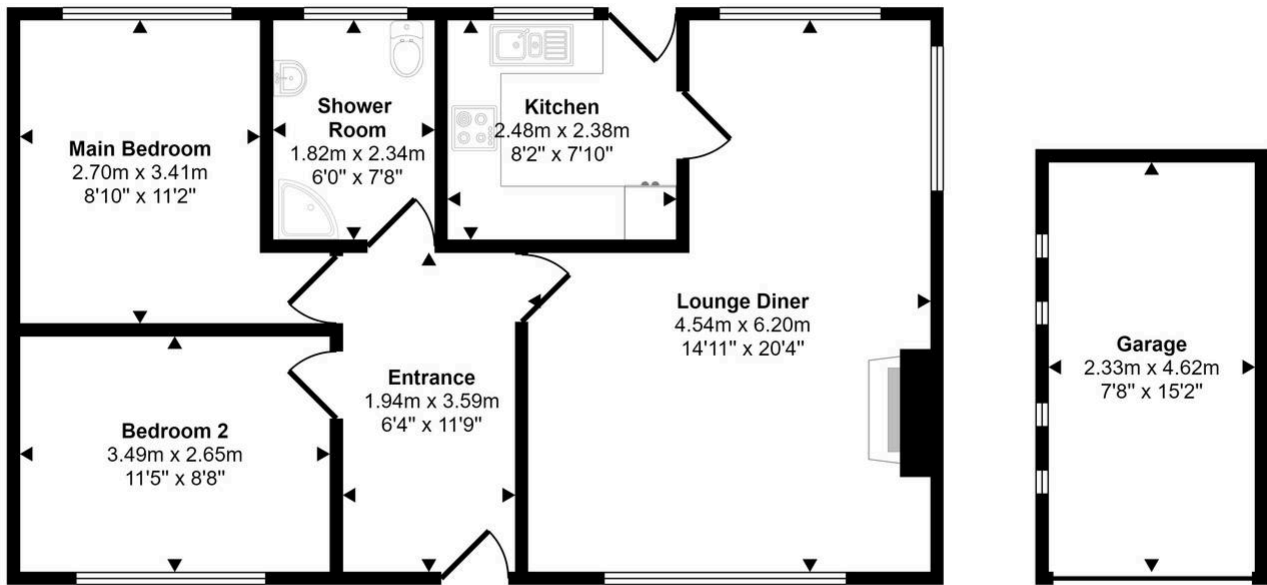


- Detached two bed bungalow
- Large open plan lounge diner
- Kitchen with ample storage
- Family shower room
- Large garden to the rear
- Drive to the side of the property
- Great potential with modernisation
- Council tax band - C
- LEASEHOLD





Approx Gross Internal Area
74 sq m / 799 sq ft



Floorplan
Approx 63 sq m / 683 sq ft

Garage
Approx 11 sq m / 116 sq ft

This floorplan is only for illustrative purposes and is not to scale. Measurements of rooms, doors, windows, and any items are approximate and no responsibility is taken for any error, omission or mis-statement. Icons of items such as bathroom suites are representations only and may not look like the real items. Made with Made Snappy 360.

You can include any text here. The text can be modified upon generating your brochure.