



4 Thurstan Close, Shevington

£270,000 Leasehold

- Semi-Detached House
- Three Bedrooms with Built-Ins
- Large Kitchen Diner
- Utility Room and Downstairs WC
- En-Suite in Master Bedroom
- Driveway to the Front
- Rear Garden with Indian Stone and Artificial Lawn
- EPC - B
- LEASEHOLD
- Council Tax Band - C

Charming semi-detached three-bed family home with modern kitchen, ample storage, En-suite master bedroom, driveway, and landscaped garden. Energy efficient, leasehold, Council Tax Band C. Ideal for modern living with stylish interiors and outdoor entertaining space.

Council Tax band: C

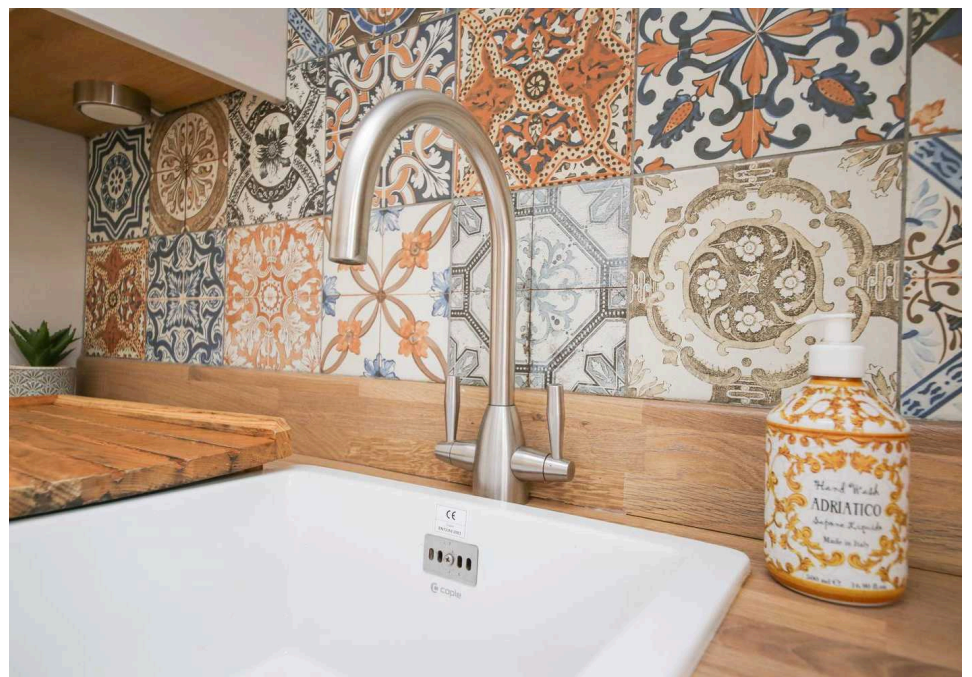
Tenure: Leasehold

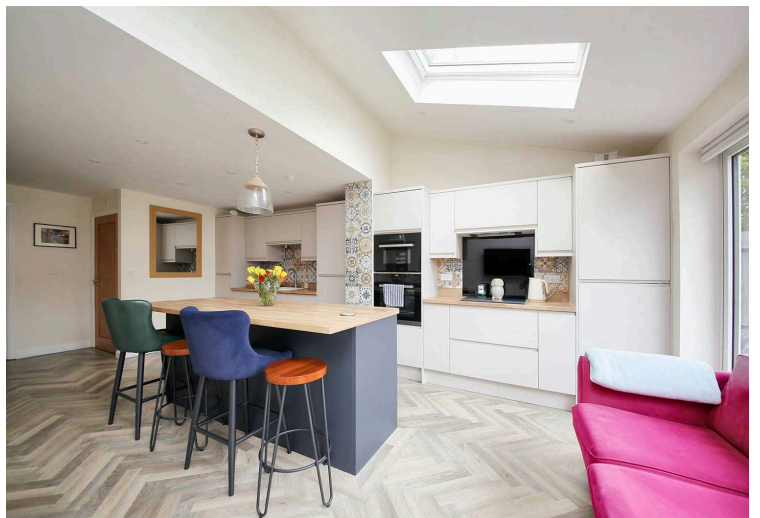
EPC Energy Efficiency Rating: B

EPC Environmental Impact Rating: B

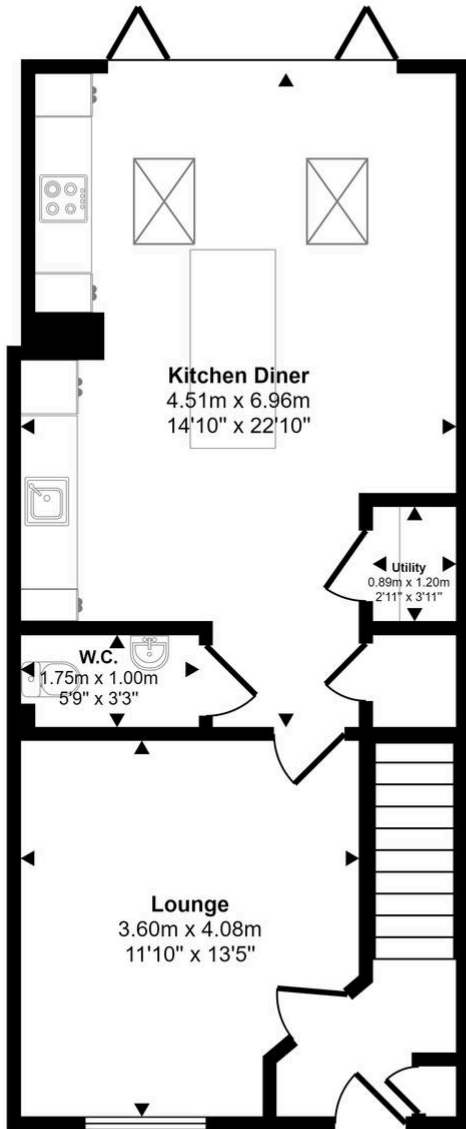


- Semi-Detached House
- Three Bedrooms with Built-Ins
- Large Kitchen Diner
- Utility Room and Downstairs WC
- En-Suite in Master Bedroom
- Driveway to the Front
- Rear Garden with Indian Stone and Artificial Lawn
- EPC - B
- LEASEHOLD
- Council Tax Band - C

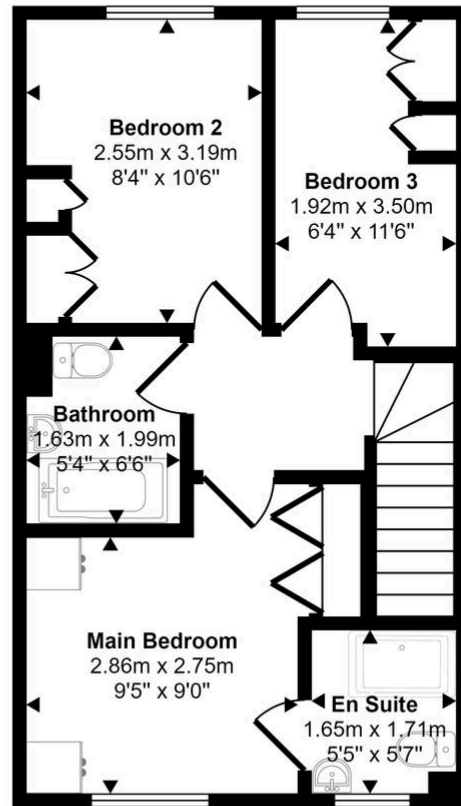




Approx Gross Internal Area
89 sq m / 955 sq ft



Ground Floor
Approx 51 sq m / 544 sq ft



First Floor
Approx 38 sq m / 411 sq ft

This floorplan is only for illustrative purposes and is not to scale. Measurements of rooms, doors, windows, and any items are approximate and no responsibility is taken for any error, omission or mis-statement. Icons of items such as bathroom suites are representations only and may not look like the real items. Made with Made Snappy 360.

You can include any text here. The text can be modified upon generating your brochure.