



## 99 Chorley Road, Standish

£210,000 Freehold

Semi Detached House • Three Bedrooms • Entrance Porch and Hall • Kitchen Diner • Tiered Garden • Not Overlooked at the Back • EPC - D • Freehold / Council Tax Band - B



Charming three-bed semi-detached house with well-maintained front garden, bright lounge, kitchen/diner, tiered back garden. EPC D, freehold, Council Tax Band B. Ideal for indoor-outdoor living. Contact us to view.

Council Tax band: B

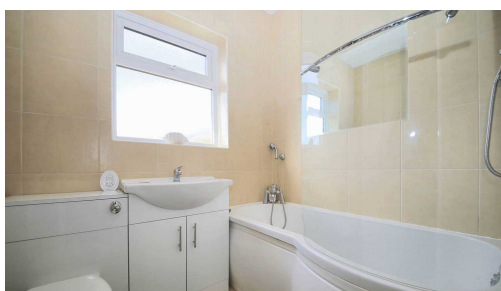
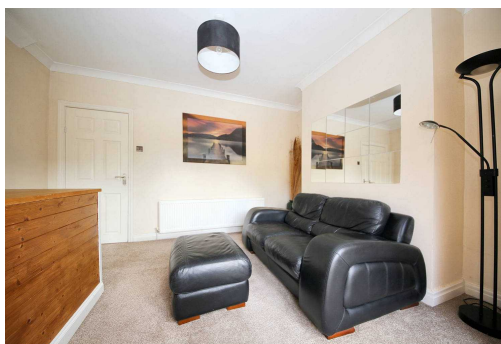
Tenure: Freehold

EPC Energy Efficiency Rating: D

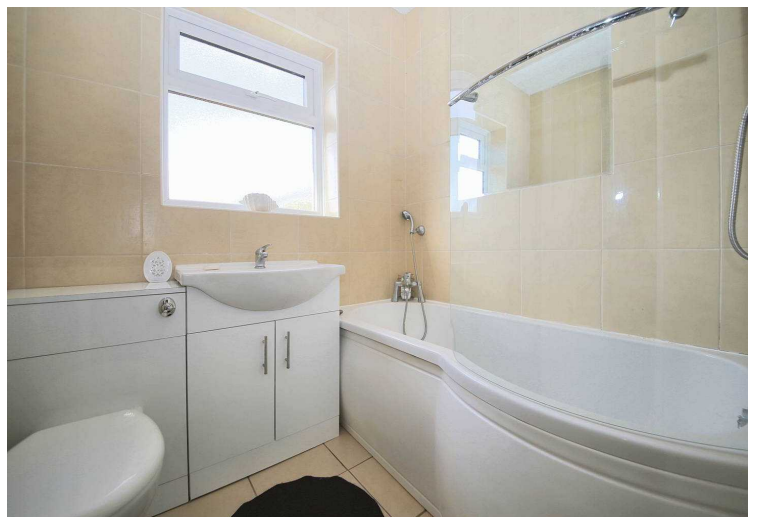
EPC Environmental Impact Rating: D



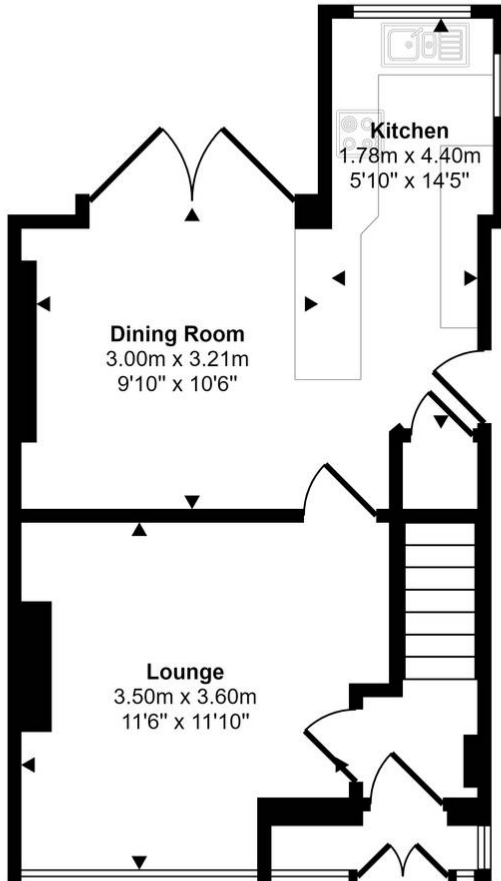
- Semi Detached House
- Three Bedrooms
- Entrance Porch and Hall
- Kitchen Diner
- Tiered Garden
- Not Overlooked at the Back
- EPC - D
- Freehold / Council Tax Band - B



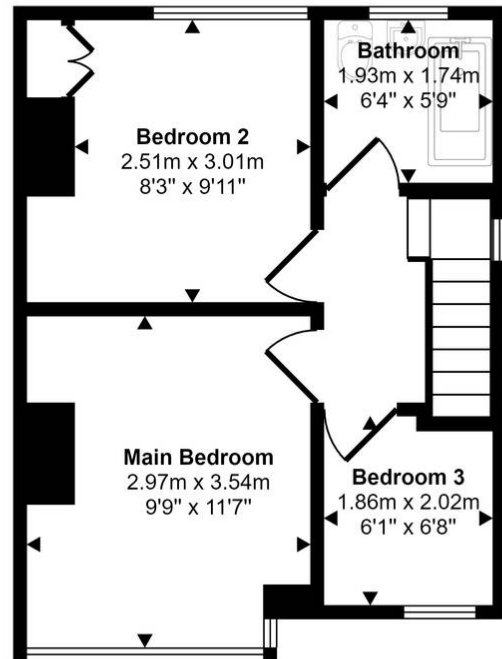




Approx Gross Internal Area  
71 sq m / 763 sq ft



Ground Floor  
Approx 39 sq m / 421 sq ft



First Floor  
Approx 32 sq m / 342 sq ft

This floorplan is only for illustrative purposes and is not to scale. Measurements of rooms, doors, windows, and any items are approximate and no responsibility is taken for any error, omission or mis-statement. Icons of items such as bathroom suites are representations only and may not look like the real items. Made with Made Snappy 360.

You can include any text here. The text can be modified upon generating your brochure.