



37 Granary Square, Aspull

£220,000 Freehold

Modern End-Terrace • Three Bedrooms • Spacious lounge with double patio doors • South-East Garden • Modern Kitchen • Downstairs W.C. • Modern Family Bathroom • Driveway with room for two cars • Great Location close to schools and transport • New build property

Council Tax band: B

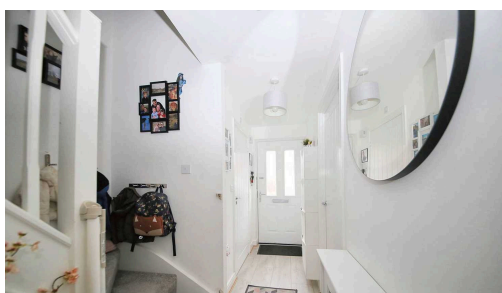
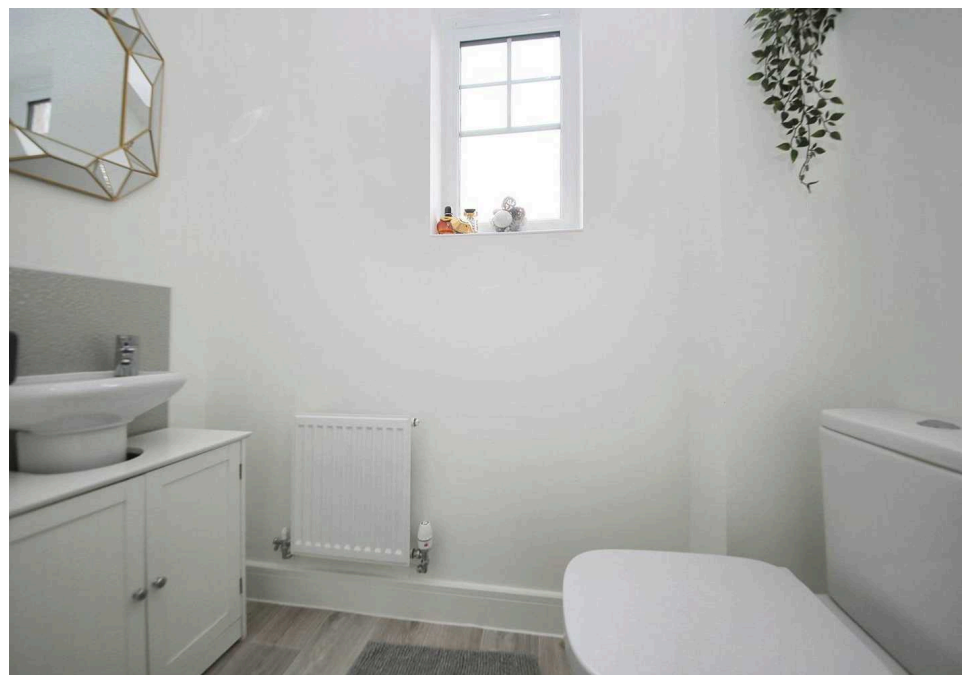
Tenure: Freehold

EPC Energy Efficiency Rating: B

EPC Environmental Impact Rating: B

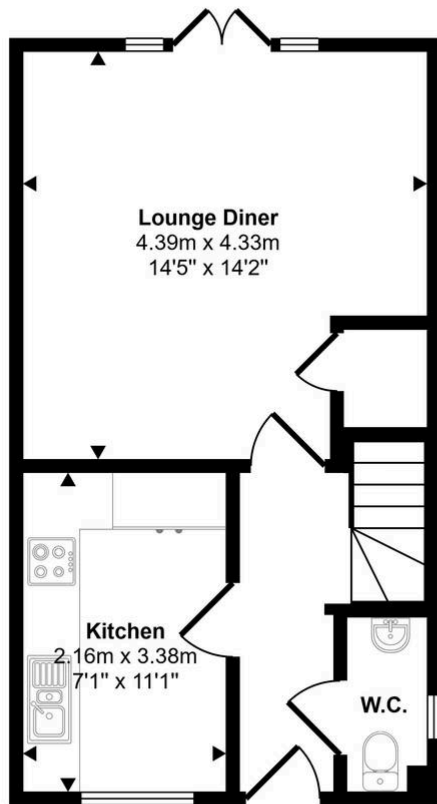


- › Modern End-Terrace
- › Three Bedrooms
- › Spacious lounge with double patio doors
- › South-East Garden
- › Modern Kitchen
- › Downstairs W.C.
- › Modern Family Bathroom
- › Driveway with room for two cars
- › Great Location close to schools and transport
- › New build property

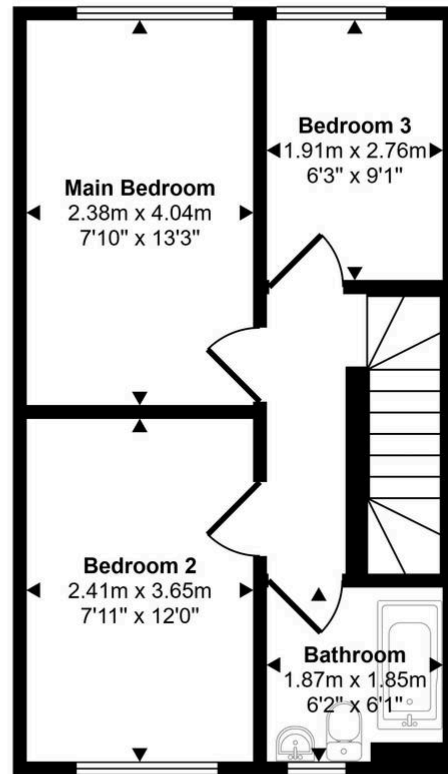




Approx Gross Internal Area
69 sq m / 746 sq ft



Ground Floor
Approx 34 sq m / 371 sq ft



First Floor
Approx 35 sq m / 375 sq ft

This floorplan is only for illustrative purposes and is not to scale. Measurements of rooms, doors, windows, and any items are approximate and no responsibility is taken for any error, omission or mis-statement. Icons of items such as bathroom suites are representations only and may not look like the real items. Made with Made Snappy 360.

You can include any text here. The text can be modified upon generating your brochure.