



9 Ashdale Road, Wigan

£170,000 Freehold

Semi Detached House • Two Reception Rooms • Large Bathroom with Separate Bath and Shower • Bursting with potential • Front Garden and Drive • Detached Garage • Rear Paved Garden • EPC - D • Freehold / Council Tax Band - B

Council Tax band: B

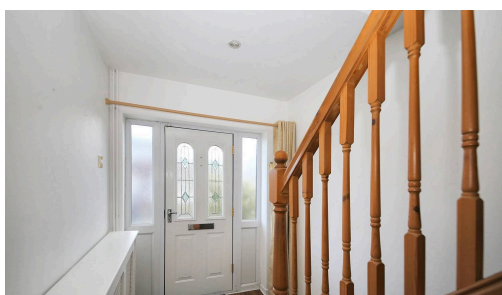
Tenure: Freehold

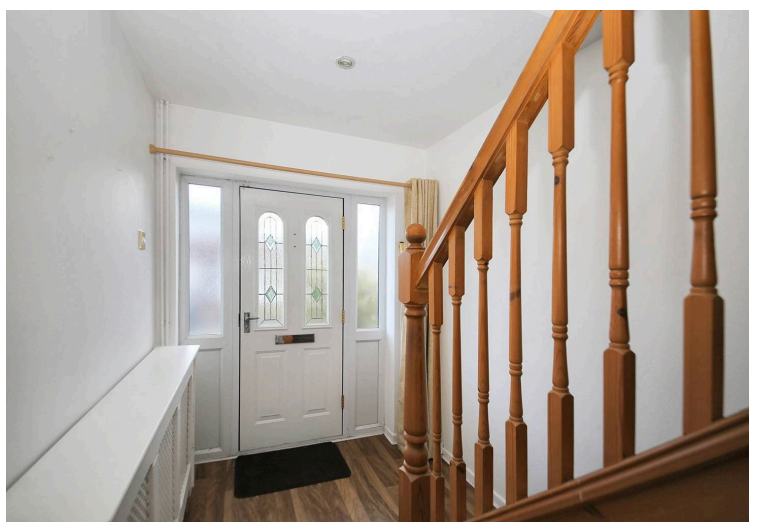
EPC Energy Efficiency Rating: D

EPC Environmental Impact Rating: D

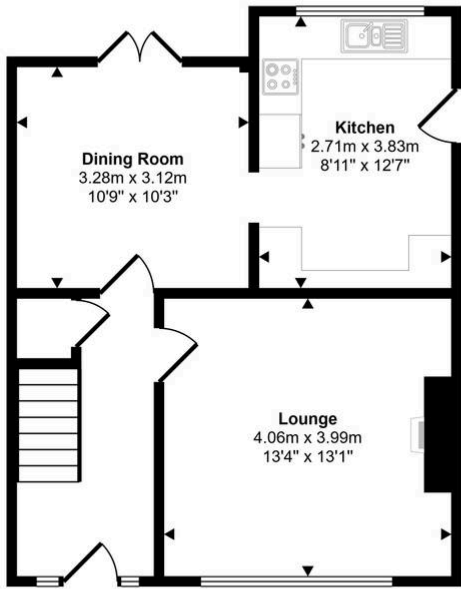


- › Semi Detached House
- › Two Reception Rooms
- › Large Bathroom with Separate Bath and Shower
- › Bursting with potential
- › Front Garden and Drive
- › Detached Garage
- › Rear Paved Garden
- › EPC - D
- › Freehold / Council Tax Band - B

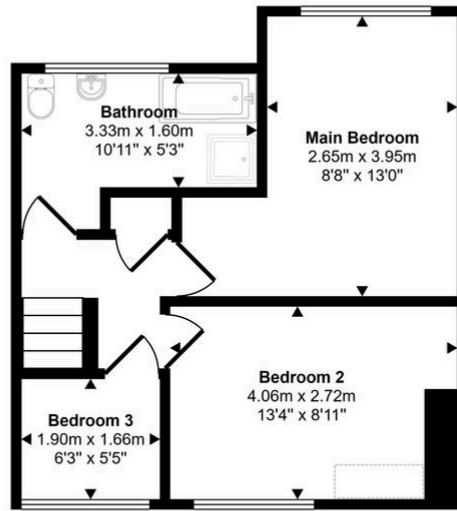




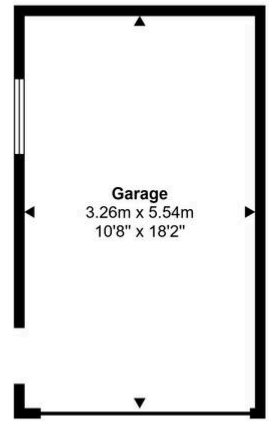
Approx Gross Internal Area
103 sq m / 1110 sq ft



Ground Floor
Approx 46 sq m / 498 sq ft



First Floor
Approx 39 sq m / 418 sq ft



Garage
Approx 18 sq m / 194 sq ft

☐ Denotes head height below 1.5m

This floorplan is only for illustrative purposes and is not to scale. Measurements of rooms, doors, windows, and any items are approximate and no responsibility is taken for any error, omission or mis-statement. Icons of items such as bathroom suites are representations only and may not look like the real items. Made with Made Snappy 360.

You can include any text here. The text can be modified upon generating your brochure.