



333 Manchester Road, Ince

£310,000 Freehold

Detached Cottage • Has private access through unadopted road • Reception room to each side of property • Master bedroom includes en suite • Large kitchen • Property includes land • Includes outbuildings and garages
• FREEHOLD / EPC rating D

Tranquil 3-bed detached cottage with private access via unadopted road. Elegant reception rooms, spacious kitchen, en-suite master bedroom. Outbuildings, garage for storage or hobbies. Surrounded by nature, secluded yet convenient location near amenities and transport links. Council Tax band: C

Tenure: Freehold

EPC Energy Efficiency Rating: F

EPC Environmental Impact Rating: F

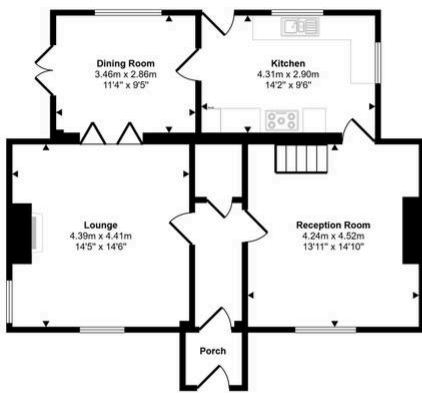


- › Detached Cottage
- › Has private access through unadopted road
- › Reception room to each side of property
- › Master bedroom includes en suite
- › Large kitchen
- › Property includes land
- › Includes outbuildings and garages
- › FREEHOLD / EPC rating D

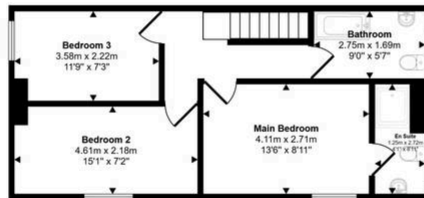




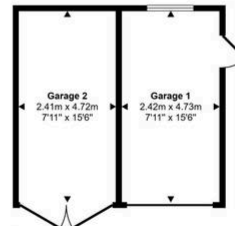
Approx Gross Internal Area
160 sq m / 1721 sq ft



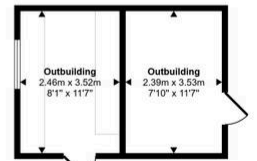
Ground Floor
Approx 72 sq m / 777 sq ft



First Floor
Approx 47 sq m / 501 sq ft



Garage
Approx 24 sq m / 253 sq ft



Outbuildings
Approx 18 sq m / 190 sq ft

This floorplan is only for illustrative purposes and is not to scale. Measurements of rooms, doors, windows, and any items are approximate and no responsibility is taken for any error, omission or mis-statement. Icons of items such as bathroom suites are representations only and may not look like the real items. Made with Made Snappy 360.

You can include any text here. The text can be modified upon generating your brochure.