



## 27 Brierfield, Skelmersdale

£105,000 Freehold

Four bedrooms • Downstairs W.C • Room for additional storage • Kitchen/diner • Garden features patio and lawn • NO CHAIN • Perfect for those looking for a property to renovate • Street Parking • Council tax band A • FREEHOLD

Fantastic 4-bed terraced house in Skelmersdale. Spacious layout with kitchen/diner, lounge, W.C. Upstairs features varying-sized bedrooms, well-appointed bathroom. Garden offers al fresco space. No chain, council tax band A. Rare opportunity for renovation enthusiasts. Contact 01942 238200 for viewing.

Council Tax band: A

Tenure: Freehold

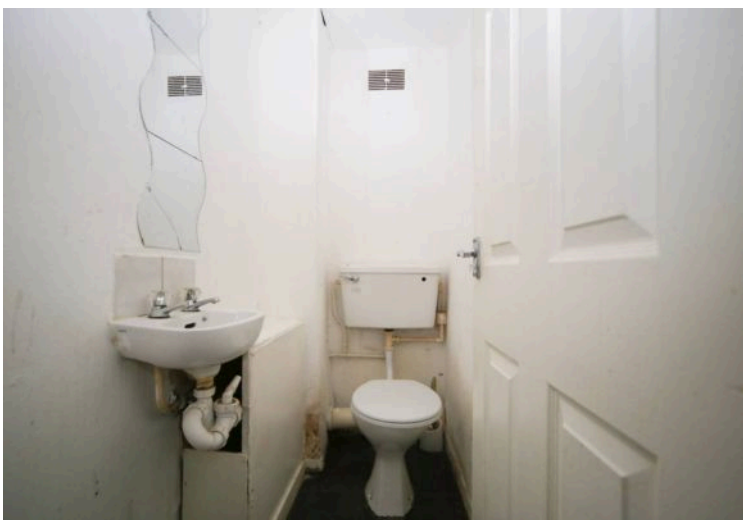
EPC Energy Efficiency Rating: D

EPC Environmental Impact Rating: E

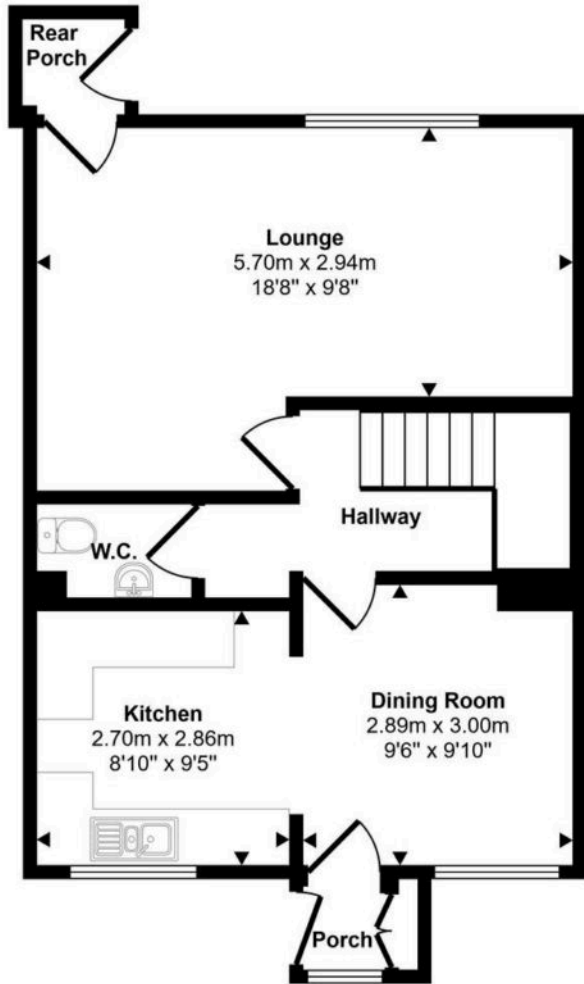


- › Four bedrooms
- › Downstairs W.C
- › Room for additional storage
- › Kitchen/diner
- › Garden features patio and lawn
- › NO CHAIN
- › Perfect for those looking for a property to renovate
- › Street Parking
- › Council tax band A
- › FREEHOLD

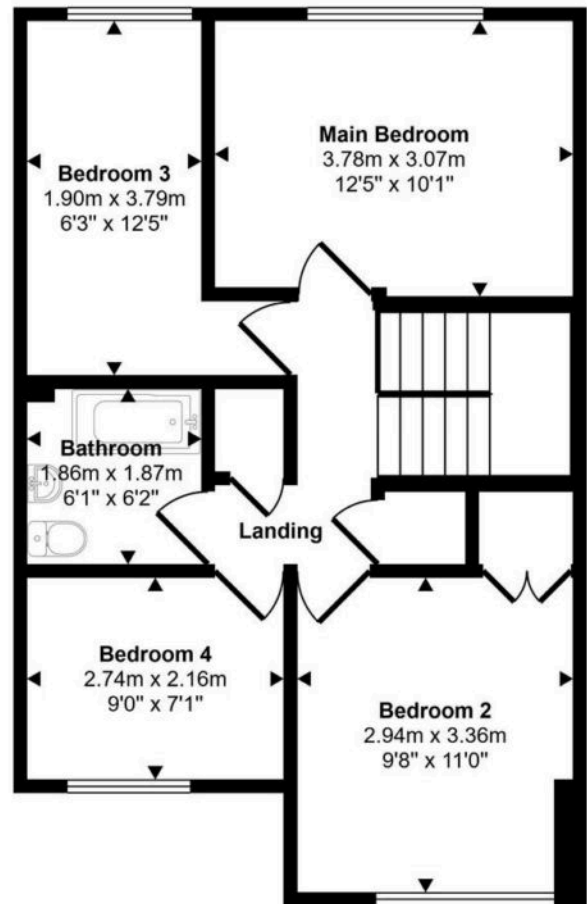




Approx Gross Internal Area  
99 sq m / 1071 sq ft



Ground Floor  
Approx 48 sq m / 519 sq ft



First Floor  
Approx 51 sq m / 551 sq ft

This floorplan is only for illustrative purposes and is not to scale. Measurements of rooms, doors, windows, and any items are approximate and no responsibility is taken for any error, omission or mis-statement. Icons of items such as bathroom suites are representations only and may not look like the real items. Made with Made Snappy 360.

You can include any text here. The text can be modified upon generating your brochure.