



54 Lulworth Drive, Hindley Green

£240,000 Leasehold

Three bedroom semi detached dorma bungalow • Open plan large lounge and diner • Large modern fitted kitchen • Large drive • Entrance hall • Modern and well kept • South facing garden • Boiler fitted last year and under warranty • Local to amenities, shops, schools, local walks with lake views

Immaculate 3-bed semi-detached dorma bungalow in sought-after area. Modern open-plan layout, chef's kitchen, spacious bedrooms. Large drive, south-facing garden, recently replaced boiler. Conveniently located near amenities and stunning lake views. Ideal blend of comfort and style. Schedule a viewing today!

Council Tax band: B

Tenure: Leasehold

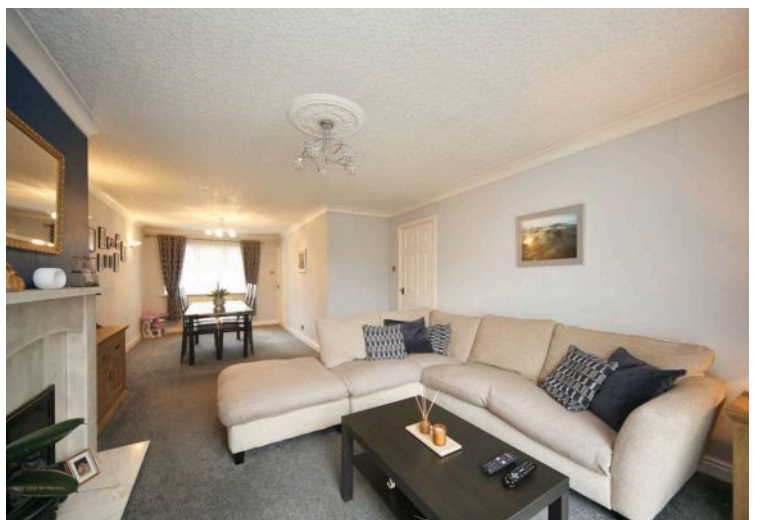
EPC Energy Efficiency Rating: D

EPC Environmental Impact Rating: G

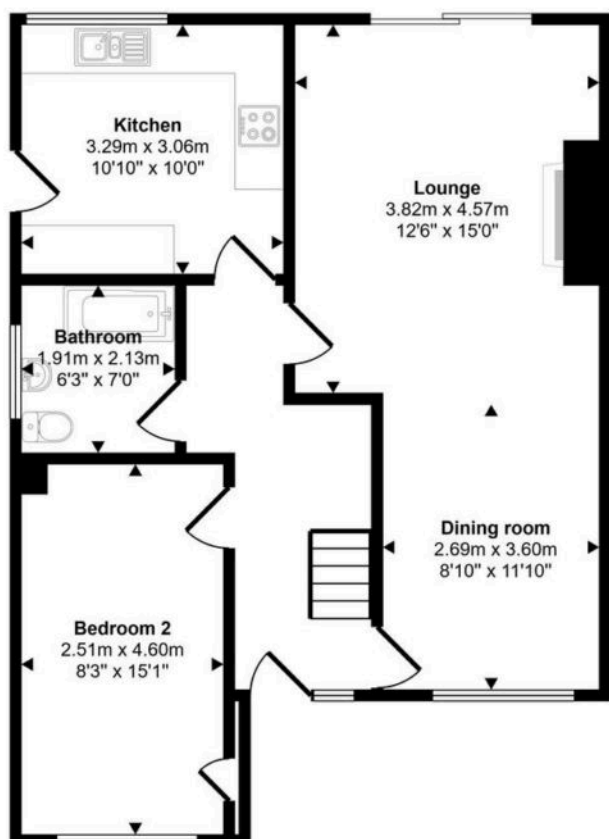


- Three bedroom semi detached dorma bungalow
- Open plan large lounge and diner
- Large modern fitted kitchen
- Large drive
- Entrance hall
- Modern and well kept
- South facing garden
- Boiler fitted last year and under warranty
- Local to amenities, shops, schools, local walks with lake views

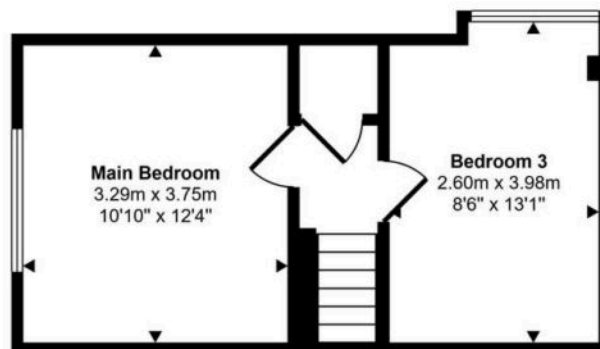




Approx Gross Internal Area
92 sq m / 990 sq ft



Ground Floor
Approx 65 sq m / 698 sq ft



First Floor
Approx 27 sq m / 292 sq ft

This floorplan is only for illustrative purposes and is not to scale. Measurements of rooms, doors, windows, and any items are approximate and no responsibility is taken for any error, omission or mis-statement. Icons of items such as bathroom suites are representations only and may not look like the real items. Made with Made Snappy 360.

You can include any text here. The text can be modified upon generating your brochure.