



466d Bolton Road, Ashton-In-Makerfield

£140,000 Leasehold

Two bedroom semi detached property • Contemporary lounge • Driveway for up to three cars at the front of the property • Downstairs W/C • Kitchen/Diner • Garden with artificial lawn and a stone path • Family bathroom • Nearby amenities such as local shops • Local walking routes such as Viridor wood • 10 minutes to Ashton-In-Makerfield

This charming 2-bed semi-detached house offers modern living in a convenient location. Spacious rooms, parking for 3 cars, and nearby amenities make it a must-see property.

Council Tax band: B

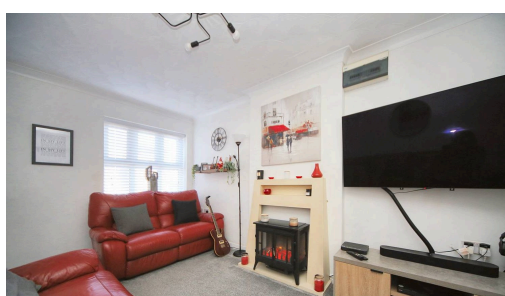
Tenure: Leasehold

EPC Energy Efficiency Rating: C

EPC Environmental Impact Rating: C

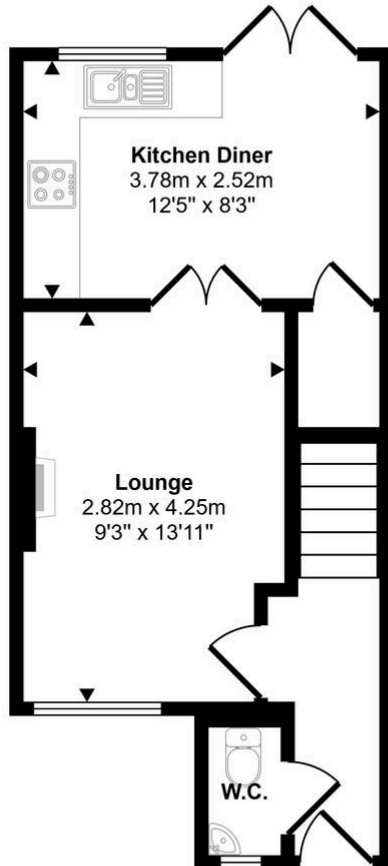


- Two bedroom semi detached property
- Contemporary lounge
- Driveway for up to three cars at the front of the property
- Downstairs W/C
- Kitchen/Diner
- Garden with artificial lawn and a stone path
- Family bathroom
- Nearby amenities such as local shops
- Local walking routes such as Viridor wood
- 10 minutes to Ashton-In-Makerfield

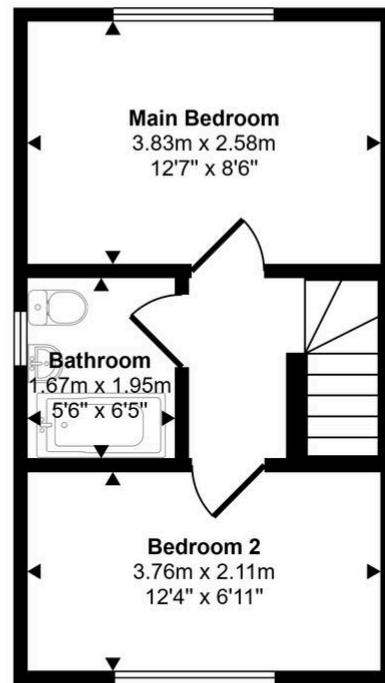




Approx Gross Internal Area
55 sq m / 596 sq ft



Ground Floor
Approx 29 sq m / 312 sq ft



First Floor
Approx 26 sq m / 283 sq ft

This floorplan is only for illustrative purposes and is not to scale. Measurements of rooms, doors, windows, and any items are approximate and no responsibility is taken for any error, omission or mis-statement. Icons of items such as bathroom suites are representations only and may not look like the real items. Made with Made Snappy 360.

You can include any text here. The text can be modified upon generating your brochure.