



102 Meadow Brook, Wigan

£280,000 Leasehold

Detached four bedroom property • Modern throughout • Large drive and detached garage • Down stairs W.C • Large family bathroom • Master bedroom benefits an ensuite • Large lounge with a media wall and electric fire • Large kitchen/diner • Front and back south facing garden • Local to amenities, local walks, shops, schools and transport links

Modern elegance meets spacious living in this sought-after detached 4-bed house. Features inclusive of a stylish interior, ample parking, a generously-sized lounge, modern kitchen/diner, and luxurious master bedroom with ensuite. Enjoy the south-facing gardens and convenient location near amenities and local walks. Live in comfort, style, and convenience in this unique family home.

Council Tax band: D

Tenure: Leasehold

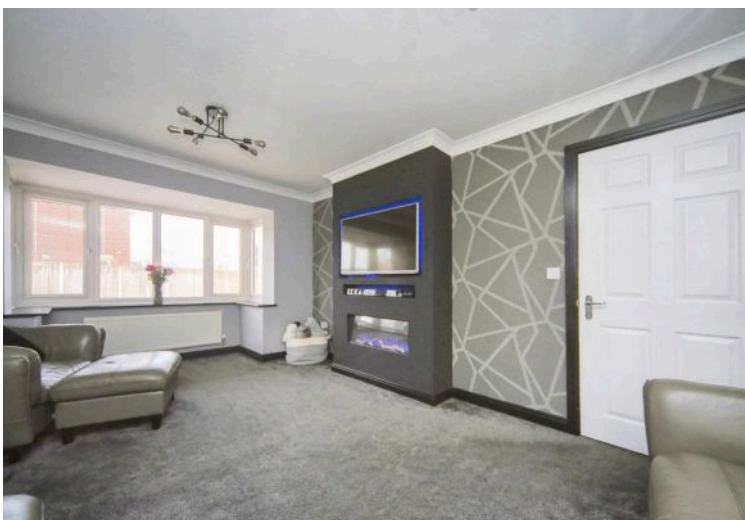
EPC Energy Efficiency Rating: B

EPC Environmental Impact Rating: B

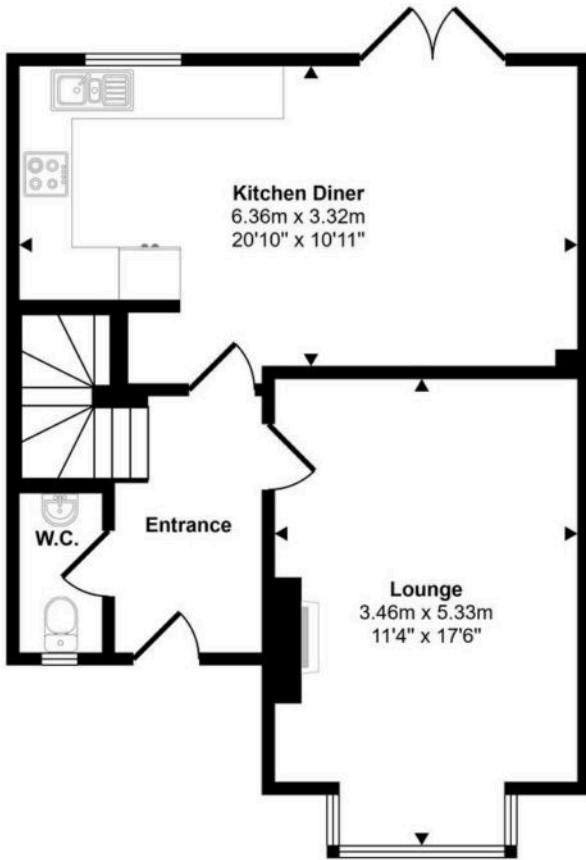


- › Detached four bedroom property
- › Modern throughout
- › Large drive and detached garage
- › Down stairs W.C
- › Large family bathroom
- › Master bedroom benefits an ensuite
- › Large lounge with a media wall and electric fire
- › Large kitchen/diner
- › Front and back south facing garden
- › Local to amenities, local walks, shops, schools and transport links

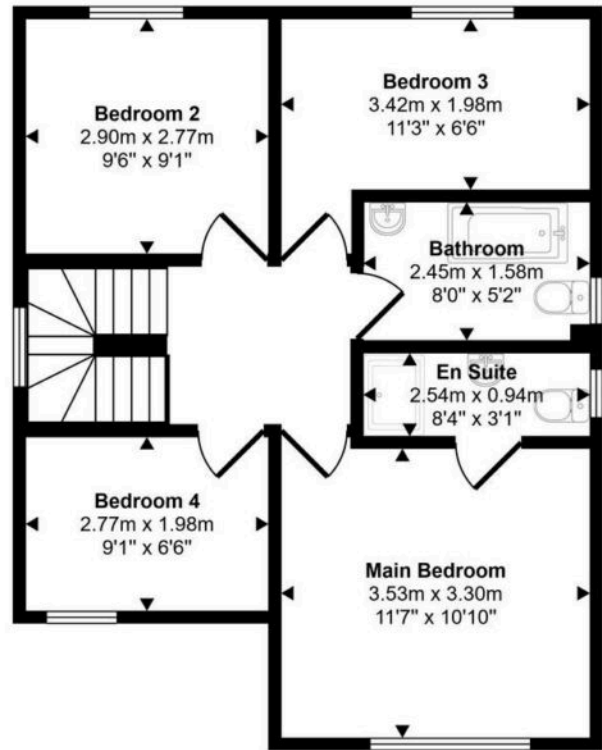




Approx Gross Internal Area
99 sq m / 1063 sq ft



Ground Floor
Approx 50 sq m / 534 sq ft



First Floor
Approx 49 sq m / 530 sq ft

This floorplan is only for illustrative purposes and is not to scale. Measurements of rooms, doors, windows, and any items are approximate and no responsibility is taken for any error, omission or mis-statement. Icons of items such as bathroom suites are representations only and may not look like the real items. Made with Made Snappy 360.

You can include any text here. The text can be modified upon generating your brochure.