

8 Convent Close, Roby Mill

£675,000 Leasehold

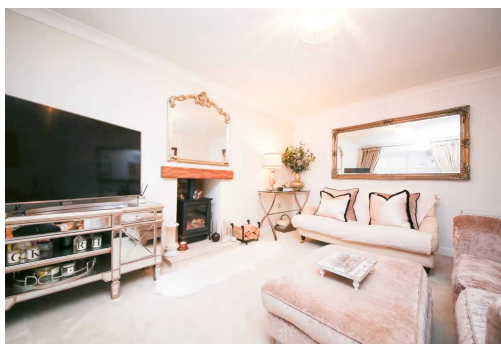
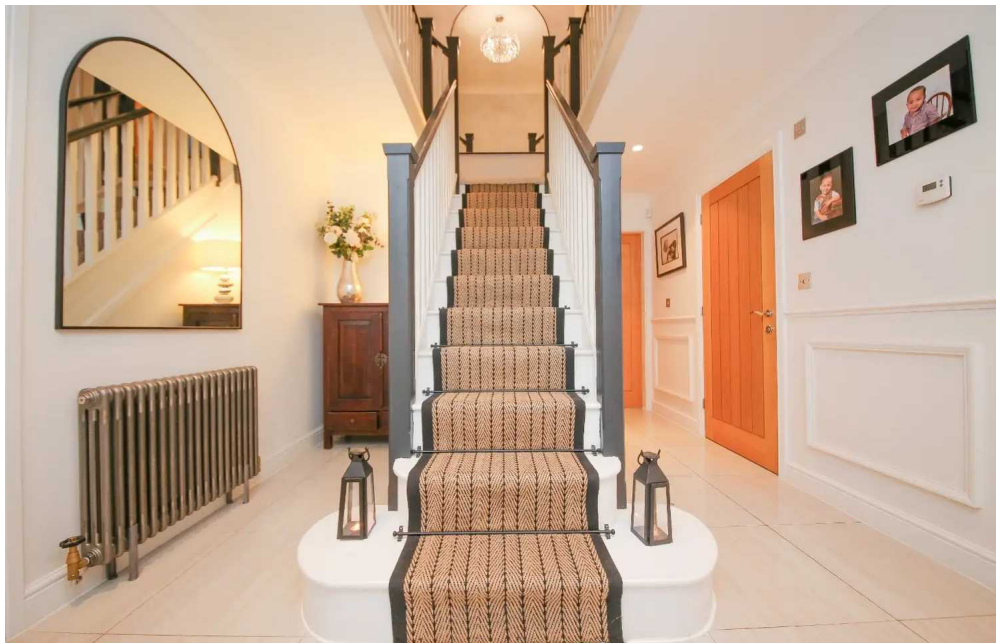
Welcome to Convent Close, an exquisite 4-bedroom detached property crafted by Morris Homes in 2016, nestled in the scenic haven of Roby Mill. Located in one of Lancashire's most picturesque spots with a substantial landscaped rear garden that measures over 150ft and enjoys gorgeous open views it bo

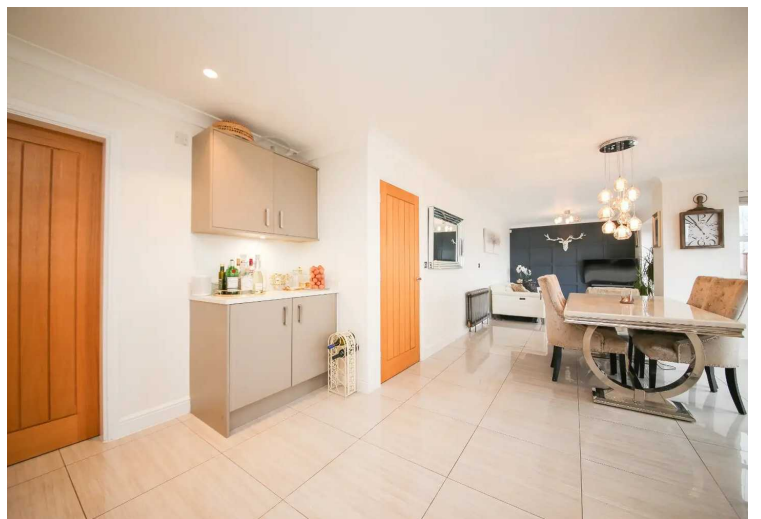
Council Tax band: F

Tenure: Leasehold

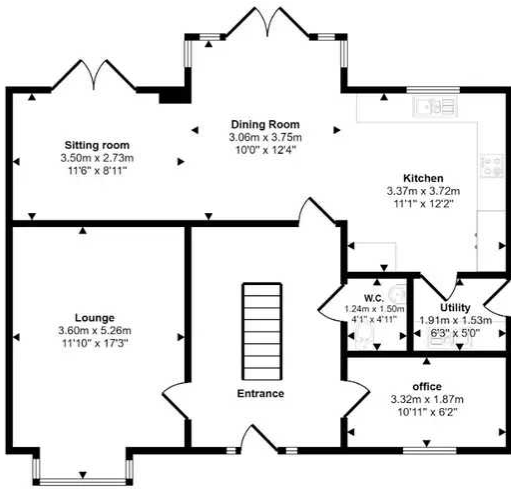
EPC Energy Efficiency Rating: B

EPC Environmental Impact Rating: B

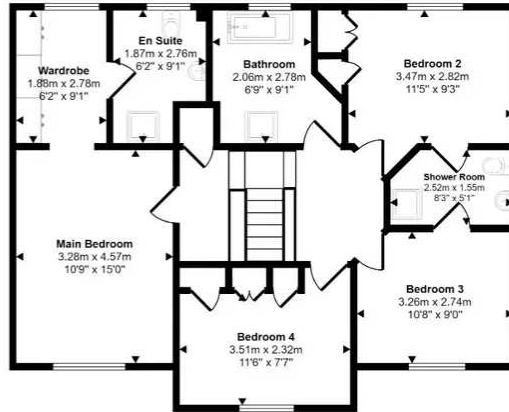




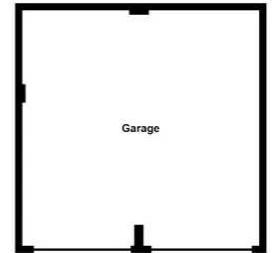
Approx Gross Internal Area
186 sq m / 1999 sq ft



Ground Floor
Approx 81 sq m / 872 sq ft



First Floor
Approx 80 sq m / 864 sq ft



Garage
Approx 24 sq m / 264 sq ft

This floorplan is only for illustrative purposes and is not to scale. Measurements of rooms, doors, windows, and any items are approximate and no responsibility is taken for any error, omission or mis-statement. Icons of items such as bathroom suites are representations only and may not look like the real items. Made with Made Snappy 360.

You can include any text here. The text can be modified upon generating your brochure.