

## 37 Kilburn Drive, Shevington

£220,000 Freehold

Semi detached bungalow • Option to have two reception rooms • Fantastic garden space with open views of fields to the rear • Cul-de-sac position • Freehold • Council tax band C • EPC- D

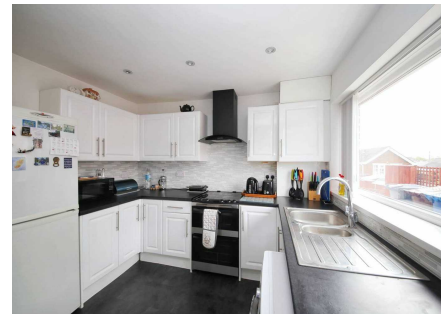


Charming 3-bed semi-detached bungalow in tranquil Shevington area. Generous plot with picturesque rear gardens. Cosy lounge with French doors, fitted kitchen, shower room. Well-maintained gardens, detached garage, gas central heating. EPC D, council tax band C. Freehold tenure. Council Tax band: C

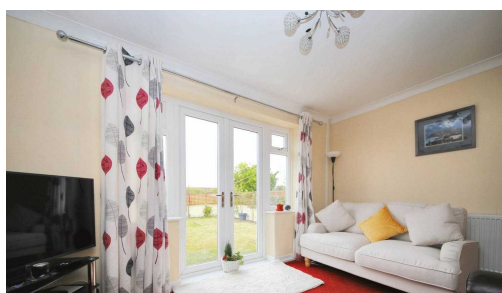
Tenure: Freehold

EPC Energy Efficiency Rating: D

EPC Environmental Impact Rating: D



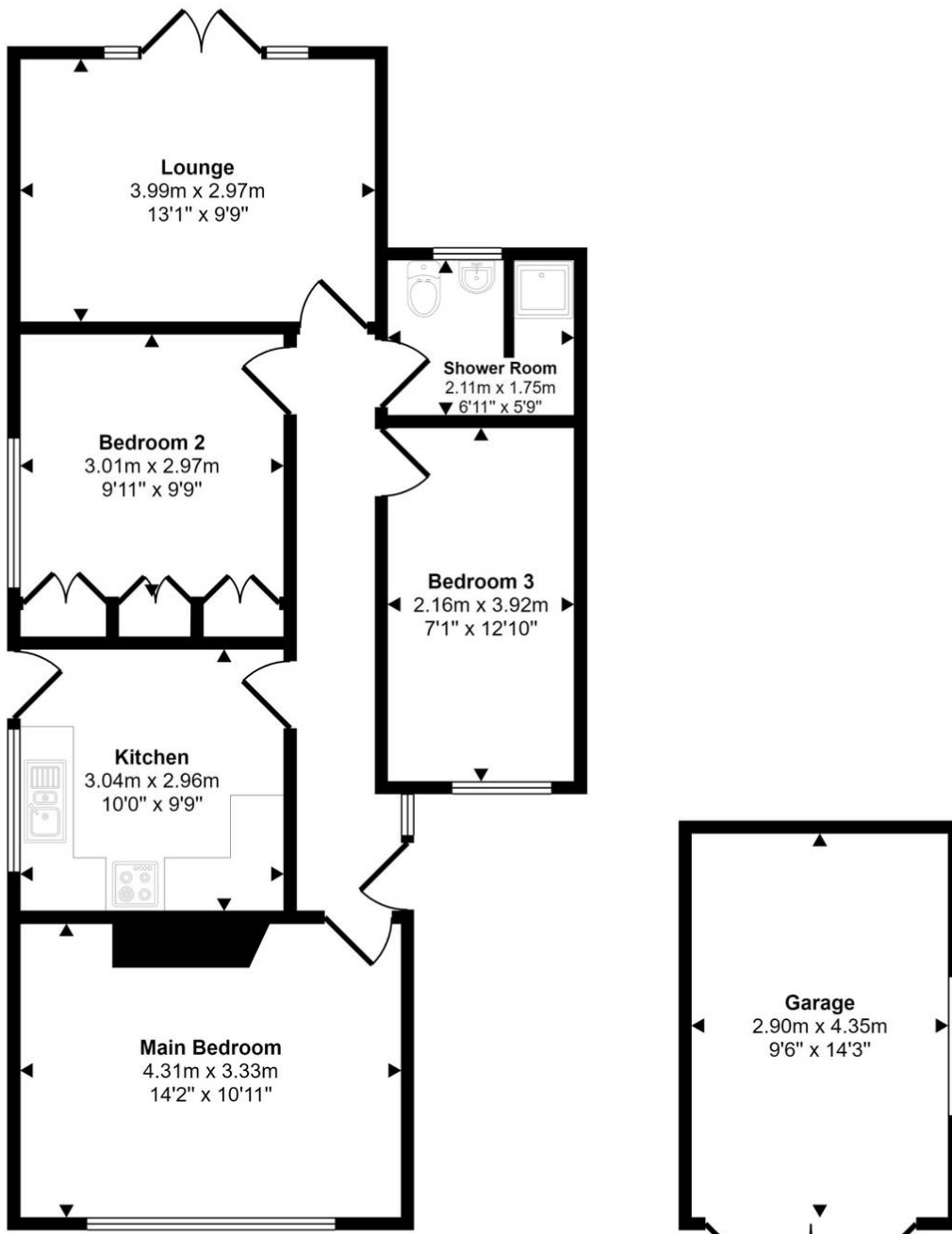
- Semi detached bungalow
- Option to have two reception rooms
- Fantastic garden space with open views of fields to the rear
- Cul-de-sac position
- Freehold
- Council tax band C
- EPC- D







Approx Gross Internal Area  
80 sq m / 859 sq ft



**Floorplan**  
Approx 67 sq m / 723 sq ft

**Garage**  
Approx 13 sq m / 136 sq ft

This floorplan is only for illustrative purposes and is not to scale. Measurements of rooms, doors, windows, and any items are approximate and no responsibility is taken for any error, omission or mis-statement. Icons of items such as bathroom suites are representations only and may not look like the real items. Made with Made Snappy 360.

You can include any text here. The text can be modified upon generating your brochure.