



10 Knightscliffe Crescent, Shevington

£210,000 Leasehold

Charming Location • Ideal for First-Time Buyers • Paved Driveway and Garage • Beautiful Front Garden • Inviting Lounge • Tranquil Conservatory • Functional Kitchen • 2 Comfortable Bedrooms • Modern Shower Room • Tenure: Freehold / Council Tax band B EPC- D

Charming 2-bed bungalow in Wigan with modern comforts. Ideal for commuters and families. Features driveway, garage, front garden, conservatory, and modern kitchen. Master bedroom with fitted wardrobes, lovely lounge with fireplace, and lush rear garden. EPC-D. Contact for viewing.

Council Tax band: B

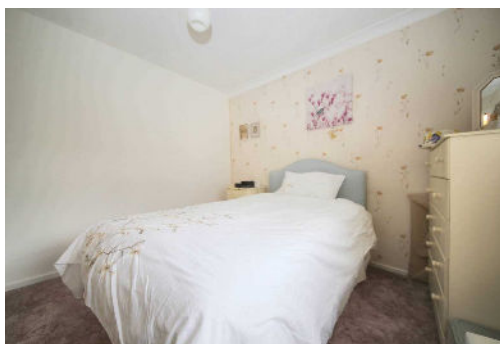
Tenure: Leasehold

EPC Energy Efficiency Rating: D

EPC Environmental Impact Rating: G

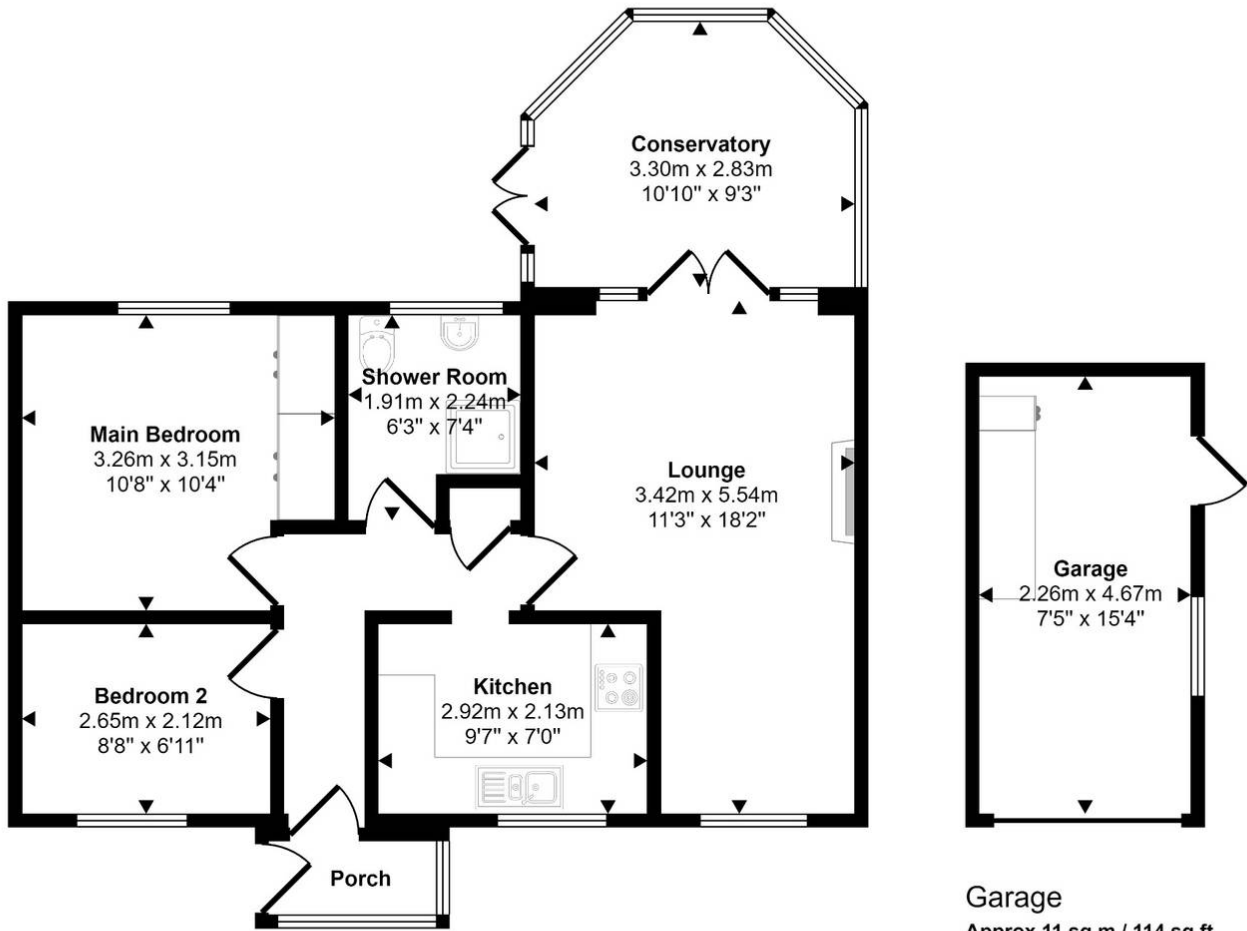


- Charming Location
- Ideal for First-Time Buyers
- Paved Driveway and Garage
- Beautiful Front Garden
- Inviting Lounge
- Tranquil Conservatory
- Functional Kitchen
- 2 Comfortable Bedrooms
- Modern Shower Room
- Tenure: Freehold / Council Tax band B EPC- D





Approx Gross Internal Area
70 sq m / 752 sq ft



Floorplan
Approx 59 sq m / 638 sq ft

This floorplan is only for illustrative purposes and is not to scale. Measurements of rooms, doors, windows, and any items are approximate and no responsibility is taken for any error, omission or mis-statement. Icons of items such as bathroom suites are representations only and may not look like the real items. Made with Made Snappy 360.

You can include any text here. The text can be modified upon generating your brochure.