



46 Manley Street, Ince

£110,000 Leasehold

2 Bedrooms • Low maintenance back yard • Utility room • Spacious lounge/diner • Large family bathroom • Leasehold • Council tax band - A

Charming 2-bed terraced house in sought-after area. Lounge/diner perfect for entertaining, well-appointed kitchen, utility room, 2 bedrooms, large family bathroom. Low-maintenance backyard. Leasehold tenure, council tax band A. Ideal for first-time buyers, small families, or investors. Council Tax band: A

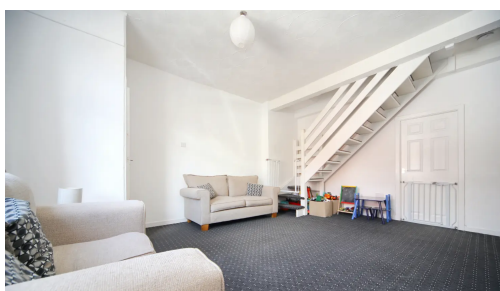
Tenure: Leasehold

EPC Energy Efficiency Rating: C

EPC Environmental Impact Rating: D

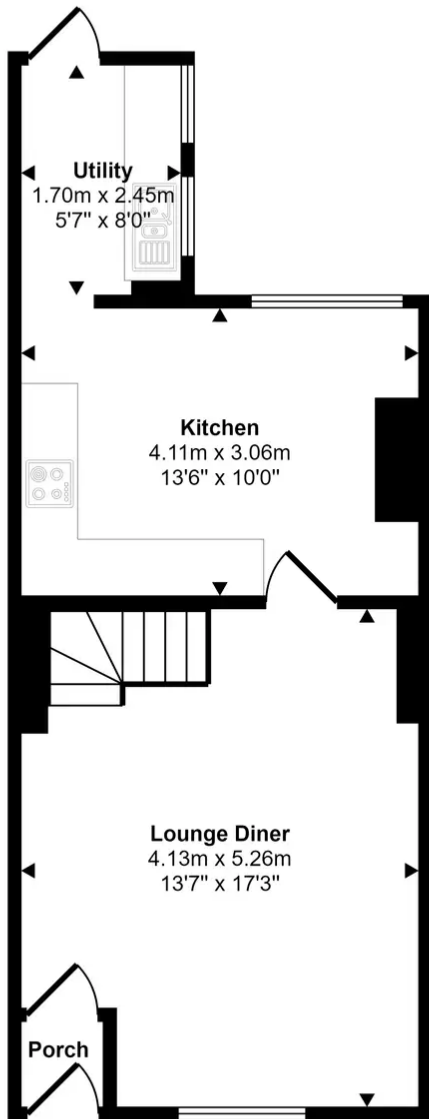


- 2 Bedrooms
- Low maintenance back yard
- Utility room
- Spacious lounge/diner
- Large family bathroom
- Leasehold
- Council tax band - A

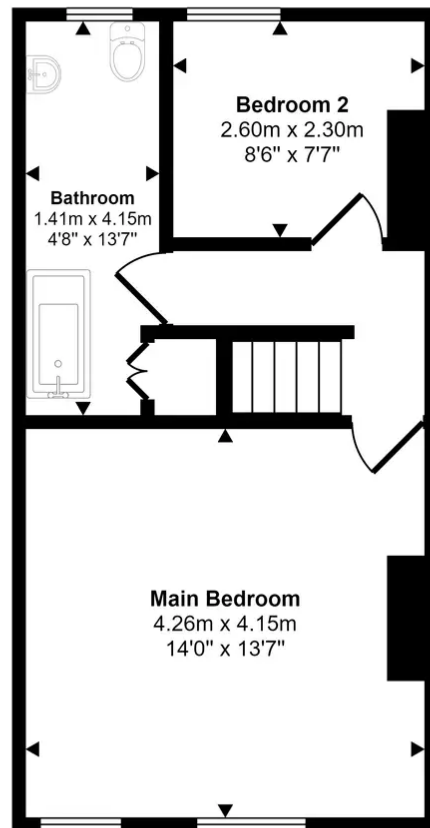




Approx Gross Internal Area
76 sq m / 816 sq ft



Ground Floor
Approx 40 sq m / 432 sq ft



First Floor
Approx 36 sq m / 384 sq ft

This floorplan is only for illustrative purposes and is not to scale. Measurements of rooms, doors, windows, and any items are approximate and no responsibility is taken for any error, omission or mis-statement. Icons of items such as bathroom suites are representations only and may not look like the real items. Made with Made Snappy 360.

You can include any text here. The text can be modified upon generating your brochure.