



162 Almond Brook Road, Standish

£199,950 Leasehold

Downstairs shower room • Large front and back garden • Driveway • Close to local amenities • No chain • Leasehold • Council tax band - B • Two bed semi-detached house

2-bed semi-detached house with modern comfort and traditional charm. Spacious living room, well-appointed kitchen, and 2 bedrooms. Large front & back garden, room for personalisation. Close to amenities. Ideal for first-time buyers, families, or investors. Offered with no onward chain. Council Tax band: B

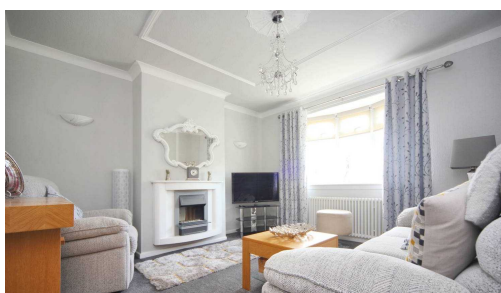
Tenure: Leasehold

EPC Energy Efficiency Rating: D

EPC Environmental Impact Rating:

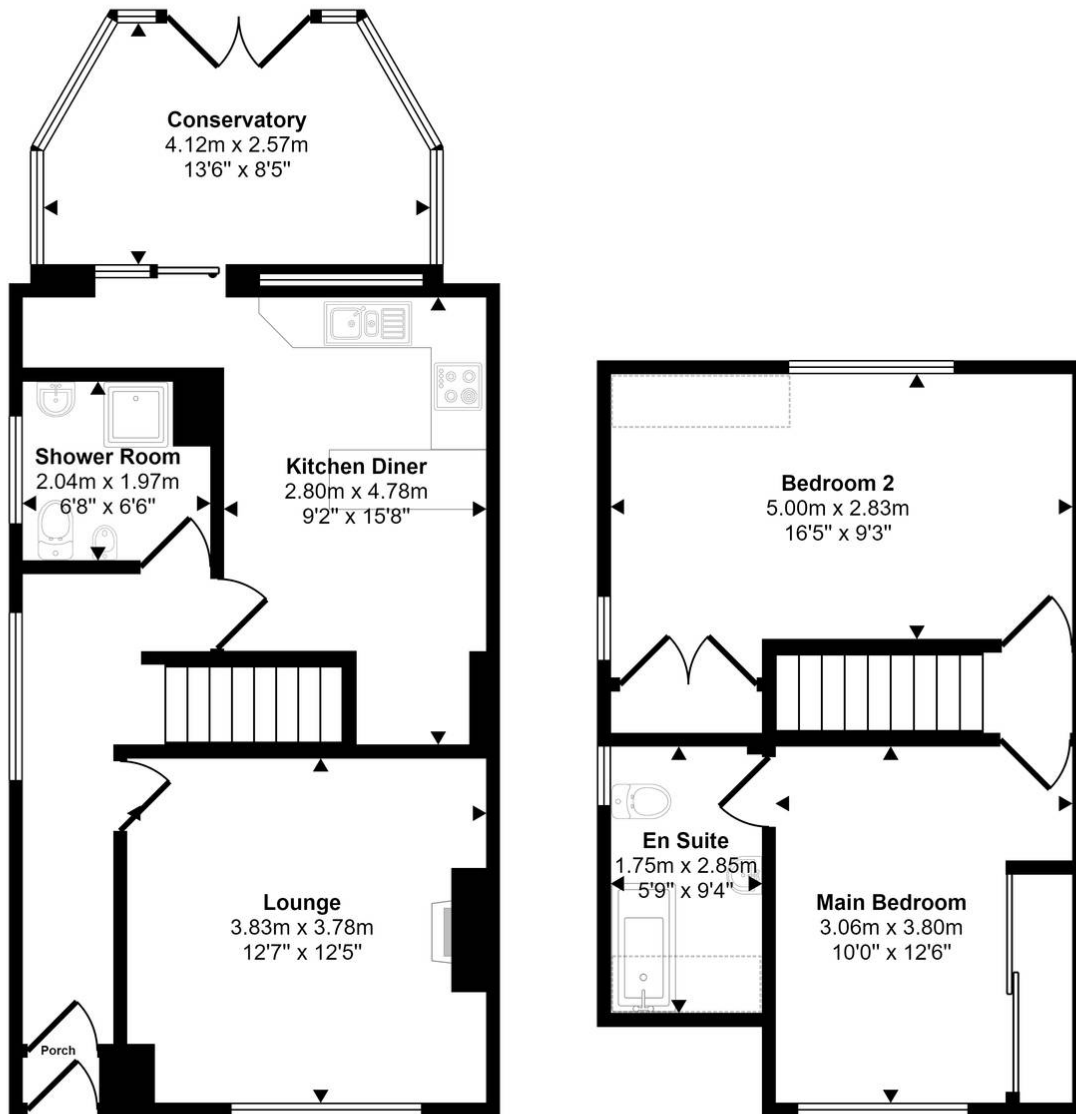


- Downstairs shower room
- Large front and back garden
- Driveway
- Close to local amenities
- No chain
- Leasehold
- Council tax band - B
- Two bed semi-detached house






Approx Gross Internal Area
92 sq m / 987 sq ft



Ground Floor
Approx 54 sq m / 585 sq ft

First Floor
Approx 37 sq m / 402 sq ft

 Denotes head height below 1.5m

This floorplan is only for illustrative purposes and is not to scale. Measurements of rooms, doors, windows, and any items are approximate and no responsibility is taken for any error, omission or mis-statement. Icons of items such as bathroom suites are representations only and may not look like the real items. Made with Made Snappy 360.

You can include any text here. The text can be modified upon generating your brochure.