



## 14 Prospect House Green Lane, Standish

£140,000 Leasehold

First floor apartment • Communal lift • En-suite to master bedroom • EPC-B • One allocated parking space •  
Council tax band - C • Leasehold - 209 years remaining £150.00 annually

Spacious 3-bed apartment in Prospect House, Standish. Features communal lift, parking, open views. Close to amenities and walking routes. Open-plan living, en-suite, main bathroom, communal lift, allocated parking. Leasehold - 209 years, £150 p.a. No chain. EPC-B. Council Tax band: C

Tenure: Leasehold

EPC Energy Efficiency Rating: B

EPC Environmental Impact Rating: B



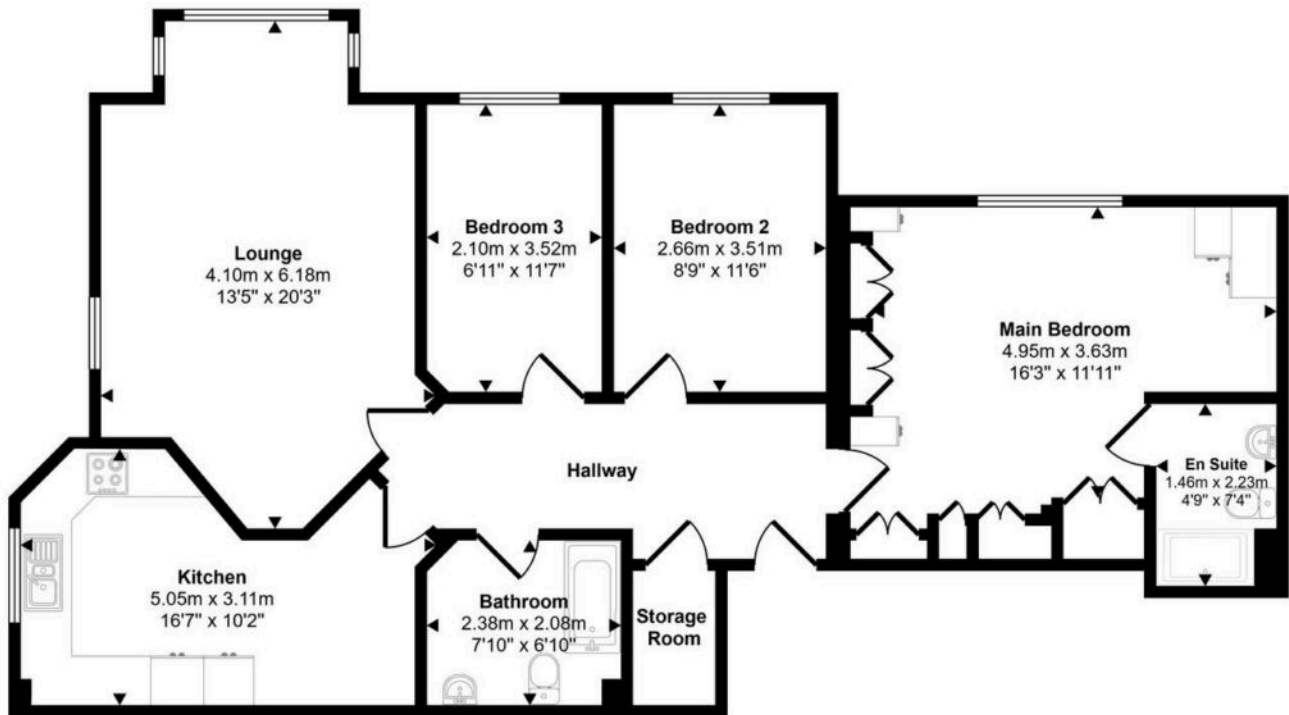
- First floor apartment
- Communal lift
- En-suite to master bedroom
- EPC-B
- One allocated parking space
- Council tax band - C
- Leasehold - 209 years remaining £150.00 annually







Approx Gross Internal Area  
91 sq m / 977 sq ft



Floorplan

This floorplan is only for illustrative purposes and is not to scale. Measurements of rooms, doors, windows, and any items are approximate and no responsibility is taken for any error, omission or mis-statement. Icons of items such as bathroom suites are representations only and may not look like the real items. Made with Made Snappy 360.

You can include any text here. The text can be modified upon generating your brochure.