



6 West Mount, Wigan

£200,000 Freehold

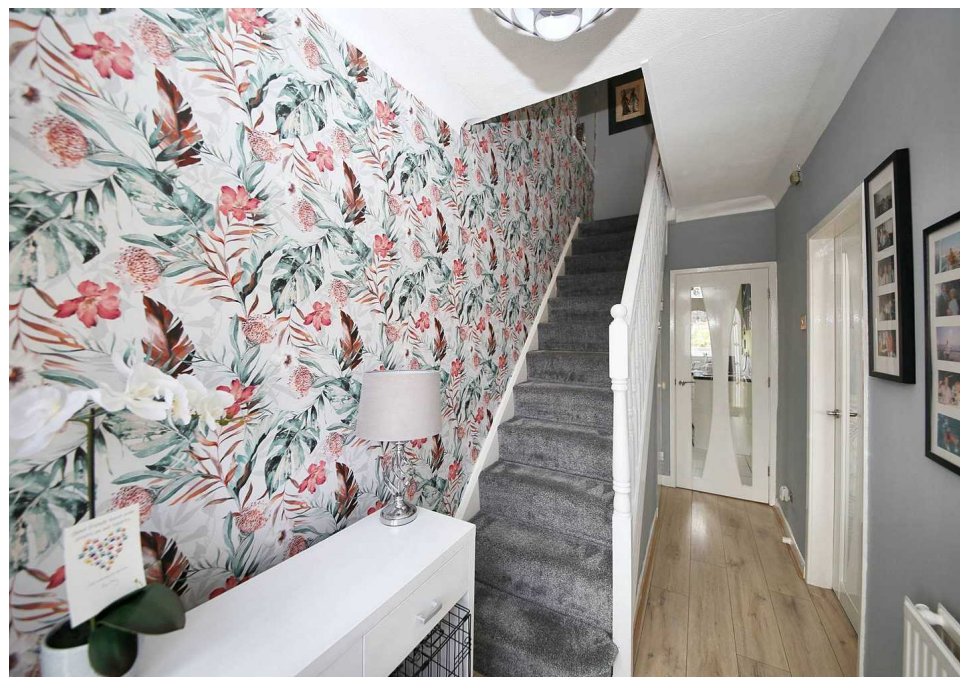
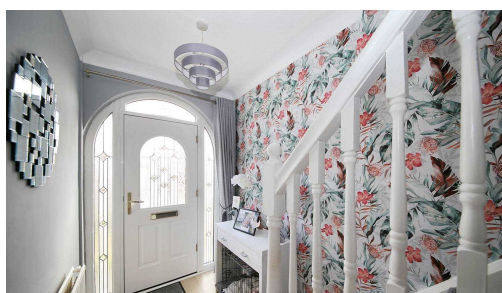
Semi Detached House • Three Bedrooms • No Chain • Entrance Hall • Two Reception Rooms • Shower Room • Driveway • Rear Garden • FREEHOLD • Council Tax Band - B

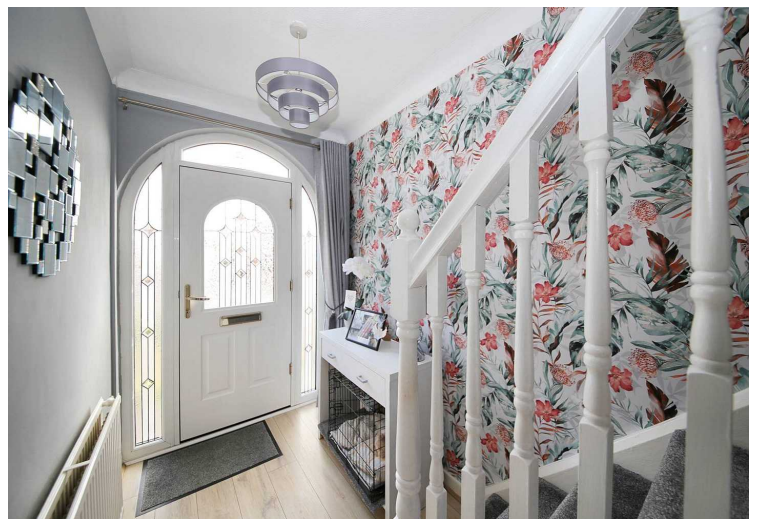
Comfortable and convenient semi-detached house without onward chain. Lounge with double doors to dining room and garden, modern kitchen, three bedrooms with built-in wardrobes, front garden, parking for two cars, freehold, Band B Council Tax.
Council Tax band: B

Tenure: Freehold

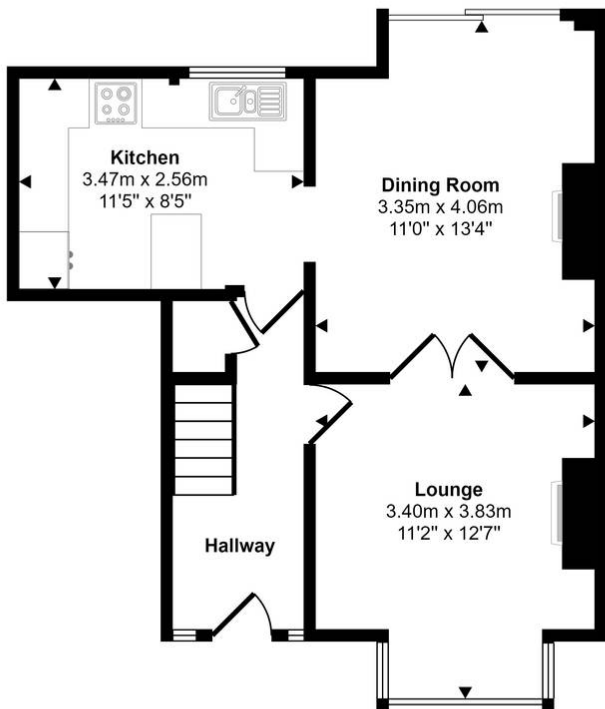


- Semi Detached House
- Three Bedrooms
- No Chain
- Entrance Hall
- Two Reception Rooms
- Shower Room
- Driveway
- Rear Garden
- FREEHOLD
- Council Tax Band - B

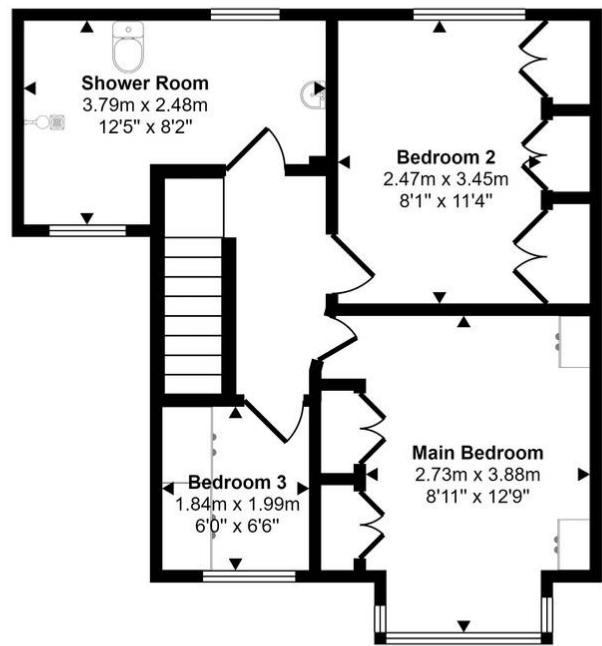




Approx Gross Internal Area
83 sq m / 895 sq ft



Ground Floor
Approx 42 sq m / 452 sq ft



First Floor
Approx 41 sq m / 443 sq ft

This floorplan is only for illustrative purposes and is not to scale. Measurements of rooms, doors, windows, and any items are approximate and no responsibility is taken for any error, omission or mis-statement. Icons of items such as bathroom suites are representations only and may not look like the real items. Made with Made Snappy 360.

You can include any text here. The text can be modified upon generating your brochure.