

10 Upper St. Stephen Street, Wigan

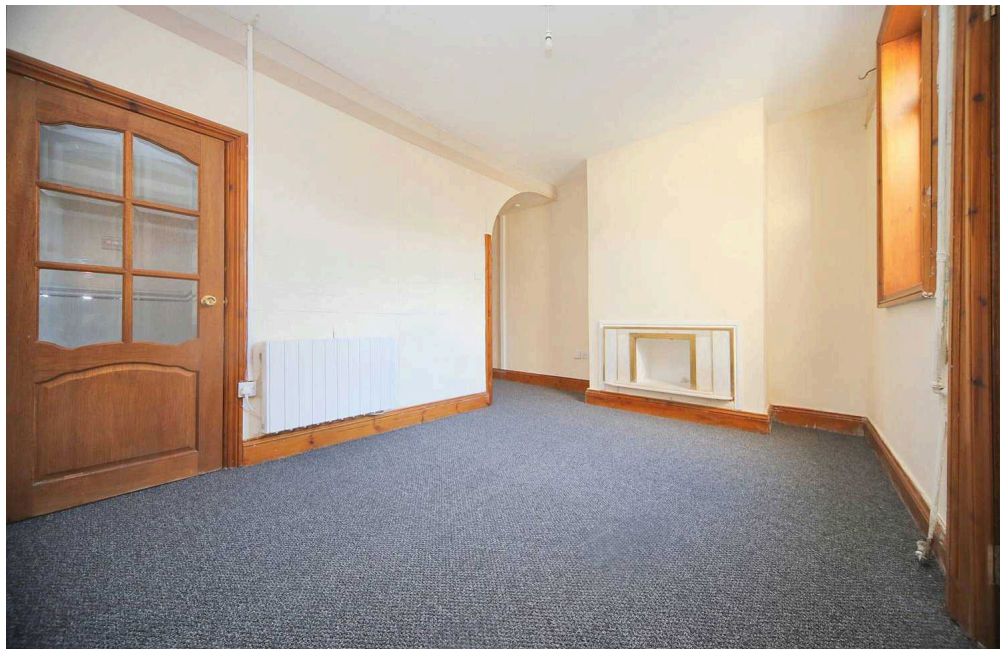
3 bedroom mid-terraced house • 2 reception rooms • Kitchen with modern fittings • Family bathroom • On street parking • Low-maintenance rear yard • Close to town centre and public transport • Close to local schools and canal walks • EPC E • Council tax band A

Nestled within a sought-after location, this three-bedroom terraced house presents a perfect opportunity for a family looking to establish their roots in a warm and welcoming community. This property is thoughtfully designed to offer practical amenities and comfortable living spaces.

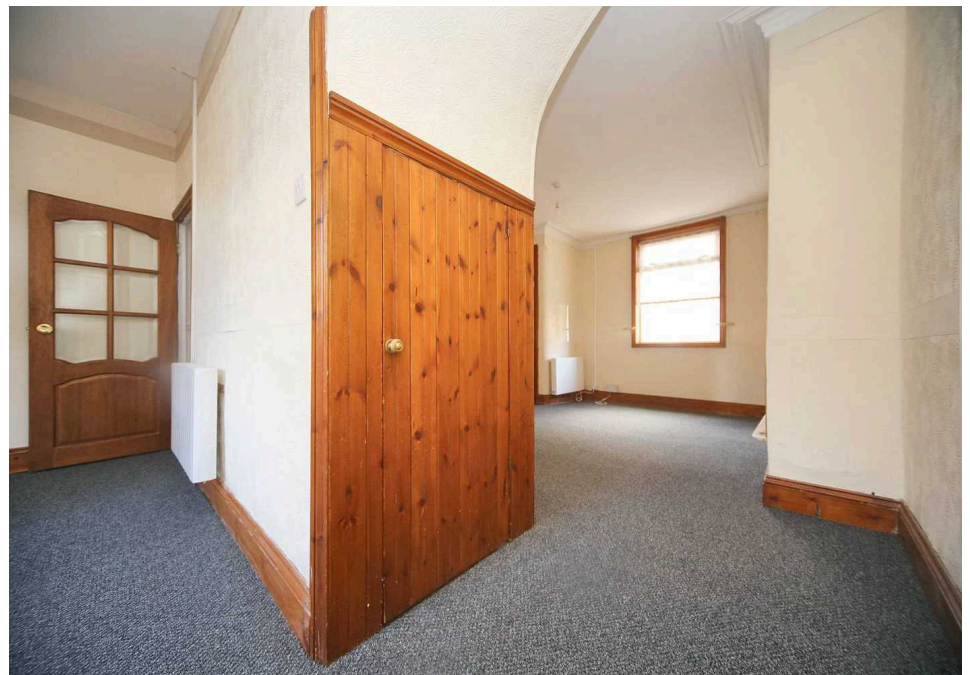
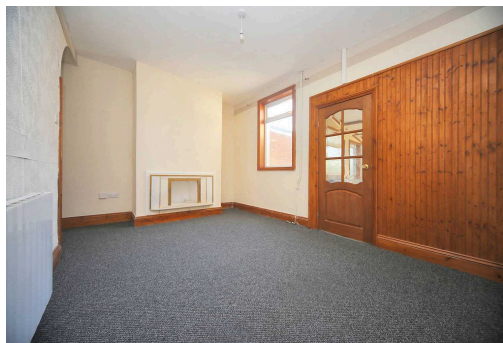
Council Tax band: A

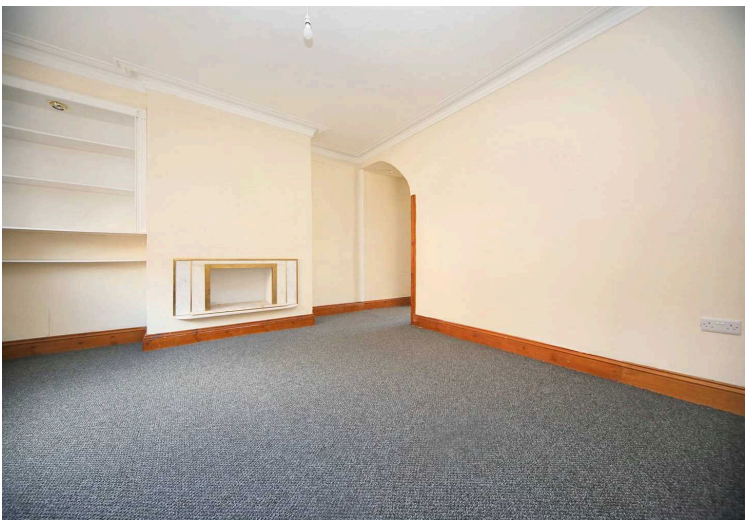
EPC Energy Efficiency Rating: E

EPC Environmental Impact Rating: E

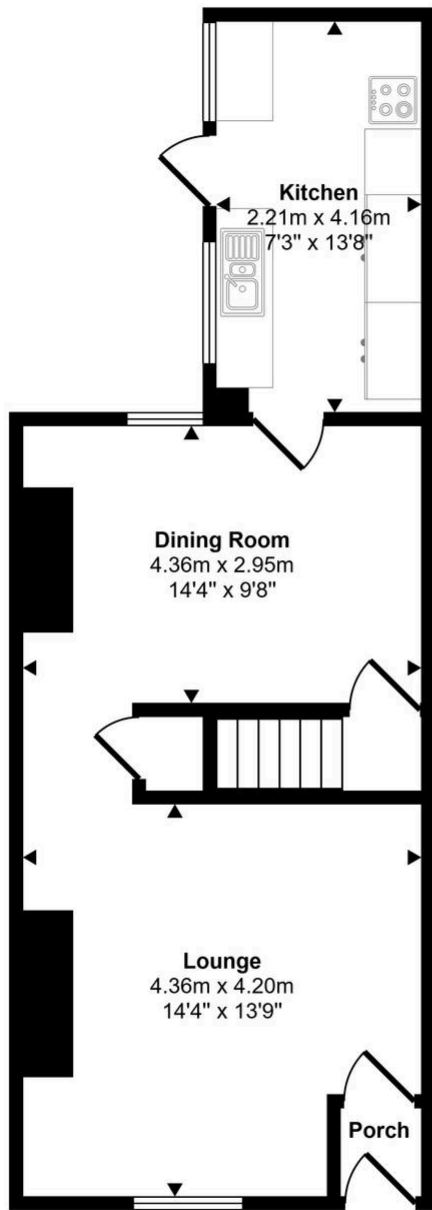


- 3 bedroom mid-terraced house
- 2 reception rooms
- Kitchen with modern fittings
- Family bathroom
- On street parking
- Low-maintenance rear yard
- Close to town centre and public transport
- Close to local schools and canal walks
- EPC E
- Council tax band A

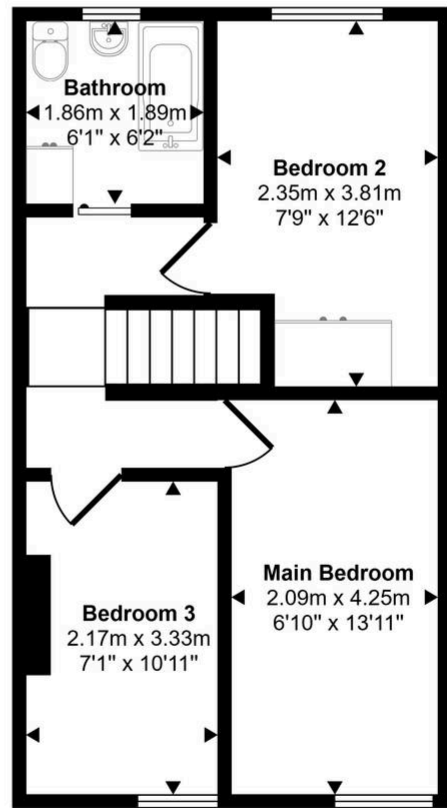




Approx Gross Internal Area
81 sq m / 868 sq ft



Ground Floor
Approx 45 sq m / 481 sq ft



First Floor
Approx 36 sq m / 387 sq ft

This floorplan is only for illustrative purposes and is not to scale. Measurements of rooms, doors, windows, and any items are approximate and no responsibility is taken for any error, omission or mis-statement. Icons of items such as bathroom suites are representations only and may not look like the real items. Made with Made Snappy 360.

You can include any text here. The text can be modified upon generating your brochure.