

696 Warrington Road, Wigan

£150,000 Leasehold

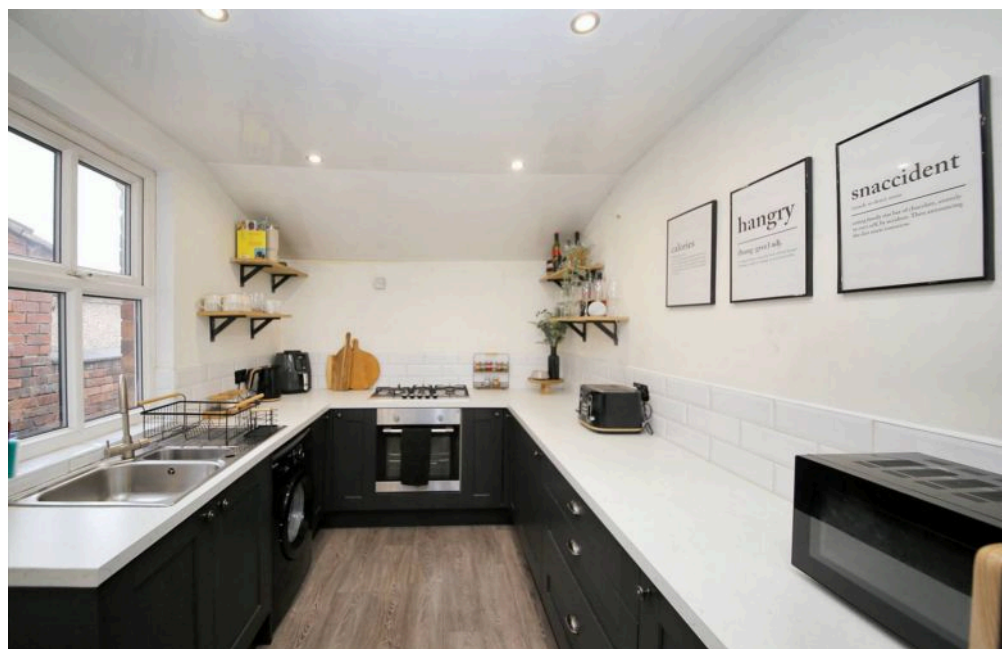
Mid Terraced House • Two Bedrooms • Wood Burning Stove • Dining Room with Doors to the Yard • Family Bathroom with Separate Bath and Shower • Garage Converted into an Entertainment Room • Leasehold / Council Tax Band - A • EPC - C

Council Tax band: A

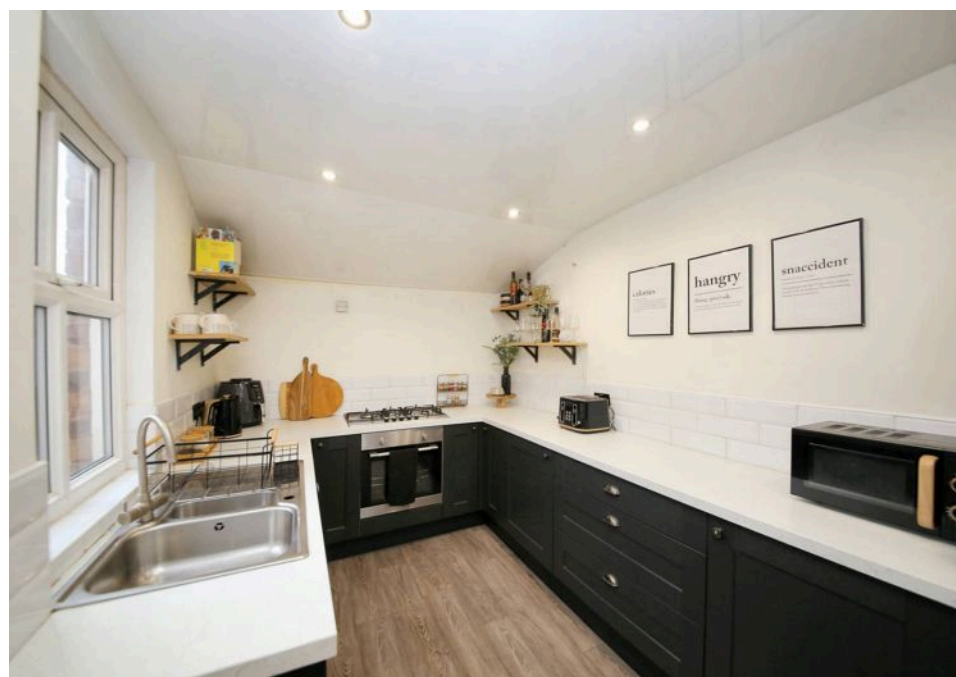
Tenure: Leasehold

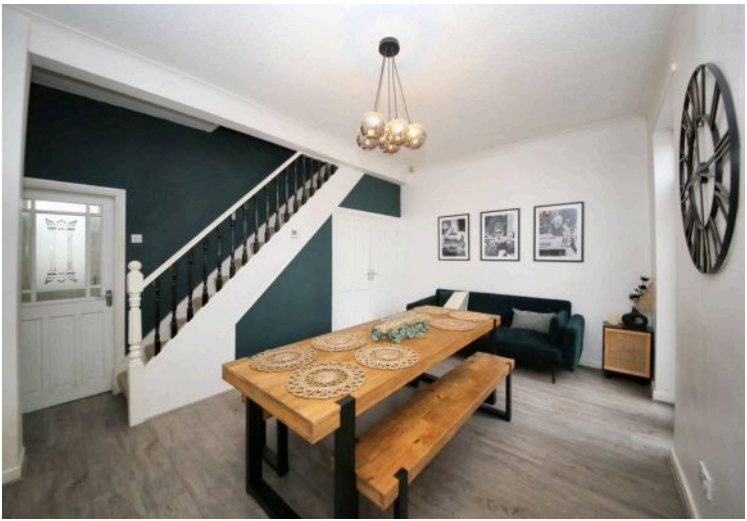
EPC Energy Efficiency Rating: D

EPC Environmental Impact Rating: D

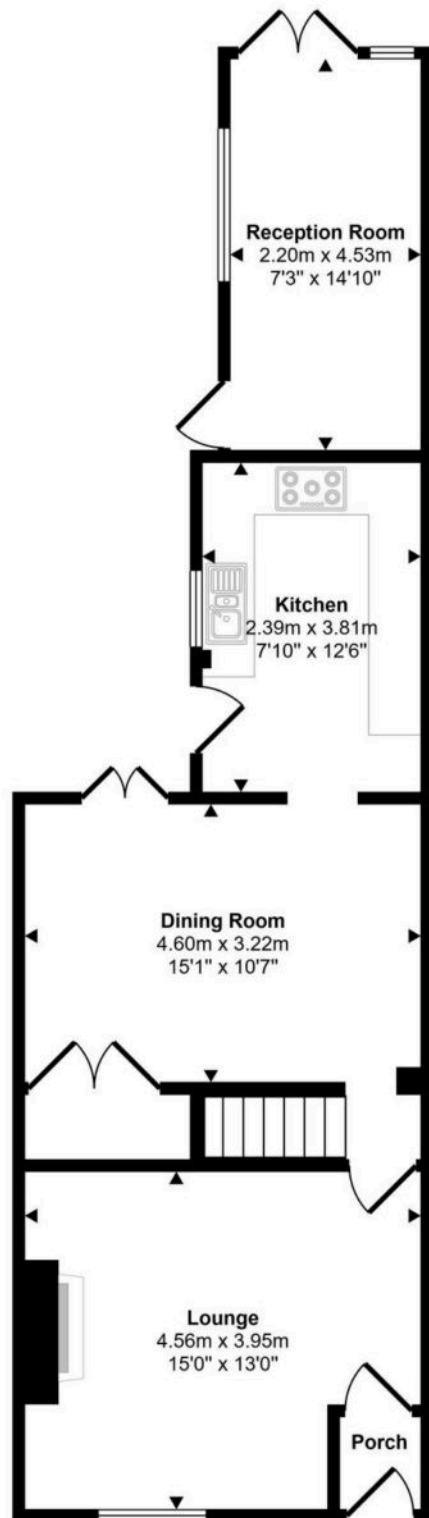


- Mid Terraced House
- Two Bedrooms
- Wood Burning Stove
- Dining Room with Doors to the Yard
- Family Bathroom with Separate Bath and Shower
- Garage Converted into an Entertainment Room
- Leasehold / Council Tax Band - A
- EPC - C

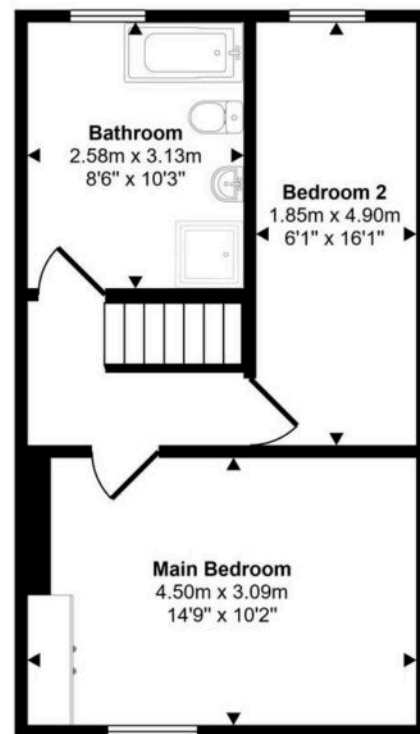




Approx Gross Internal Area
95 sq m / 1020 sq ft



Ground Floor
Approx 58 sq m / 622 sq ft



First Floor
Approx 37 sq m / 399 sq ft

This floorplan is only for illustrative purposes and is not to scale. Measurements of rooms, doors, windows, and any items are approximate and no responsibility is taken for any error, omission or mis-statement. Icons of items such as bathroom suites are representations only and may not look like the real items. Made with Made Snappy 360.

You can include any text here. The text can be modified upon generating your brochure.