

1 Meadow Gardens, Orrell

£750,000 Freehold

Contemporary stone built house • Magnificent open plan living • High specification finish throughout • 3469 SQ.FT • Luxury fittings & bespoke design • Exclusive cul-de-sac / Not part of an estate • Beautiful master bedroom suite • FREEHOLD/ EPC- B/ Council tax band- F • Four reception rooms

Exceptional 5/6 bed detached home in sought-after Meadow Gardens, Orrell. Modern living, spacious layout, luxury finishes. Gorgeous master suite, en-suites, games room, garage, private garden. Family-friendly area with good amenities and schools. Ideal for family living.

Council Tax band: F

Tenure: Freehold

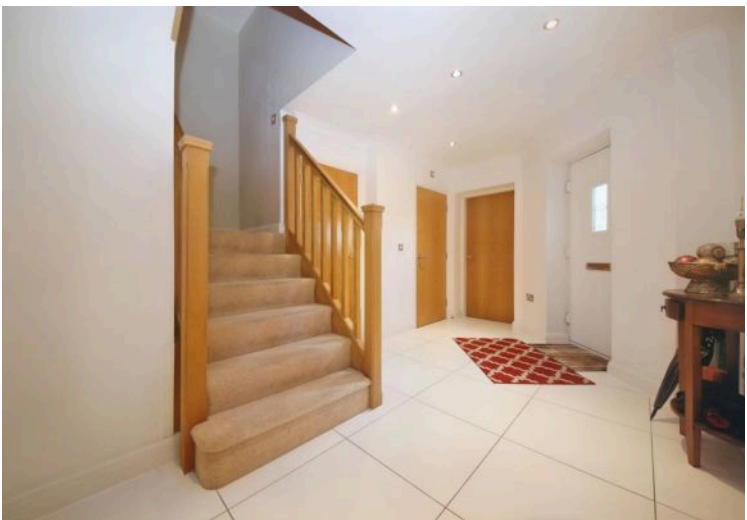
EPC Energy Efficiency Rating: B

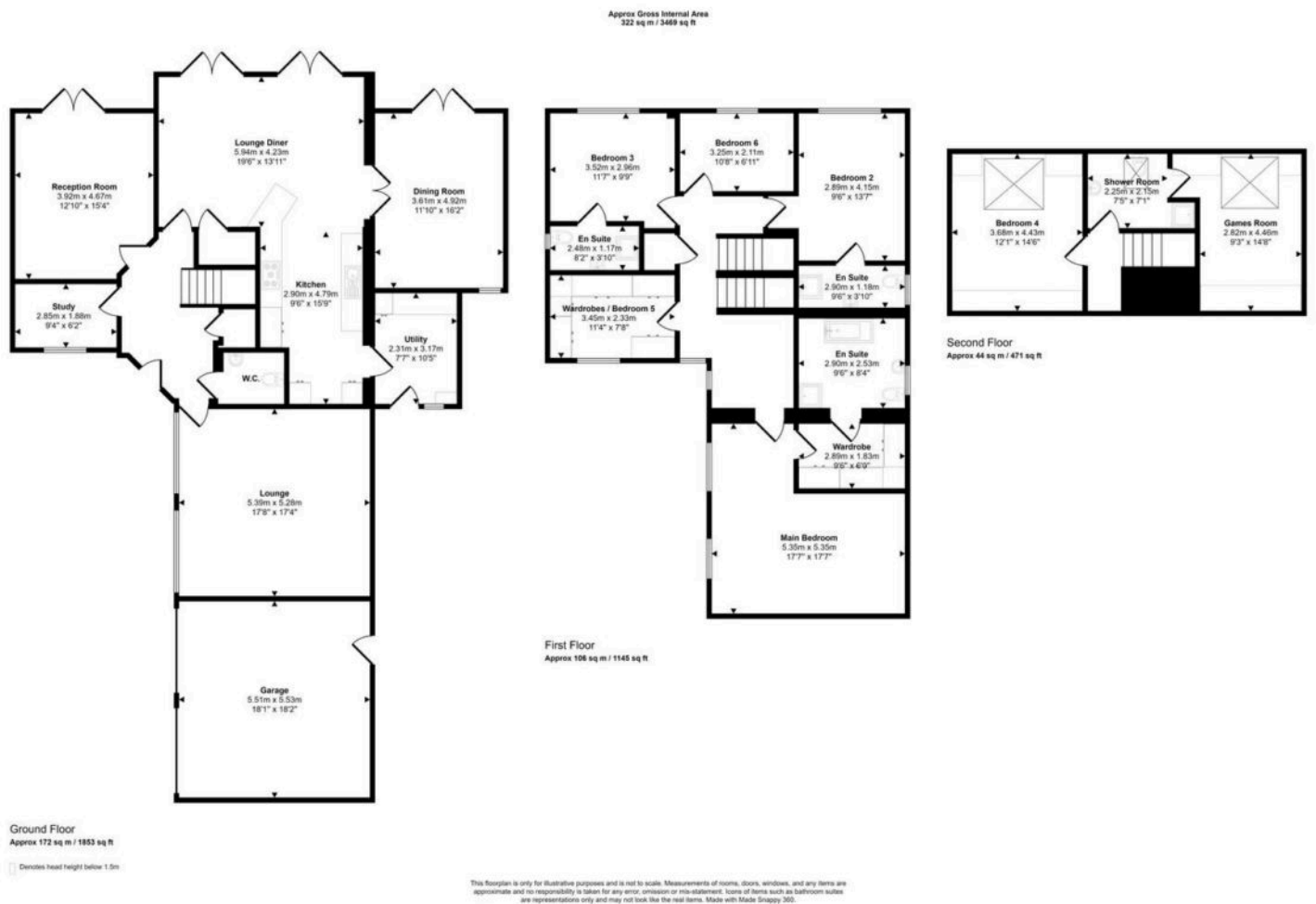
EPC Environmental Impact Rating: B



- Contemporary stone built house
- Magnificent open plan living
- High specification finish throughout
- 3469 SQ.FT
- Luxury fittings & bespoke design
- Exclusive cul-de-sac / Not part of an estate
- Beautiful master bedroom suite
- FREEHOLD/ EPC- B/ Council tax band- F
- Four reception rooms







You can include any text here. The text can be modified upon generating your brochure.