

## 39 Mill Street, Ashton-In-Makerfield

£250,000 Freehold

Four-bedroom end-terrace on Mill Street. • Driveway parking. • Kitchen/diner, lounge with French doors. • Downstairs WC. • Three bedrooms, family bathroom. • Master suite with en-suite, dressing room, attic windows, and large garden. • Freehold • EPC - C • Council Tax Band - B

Stunning 4-bed end-of-terrace new build in Ashton-In-Makerfield. Modern design, spacious, perfect for families. Stylish kitchen, three floors, en-suite master, large garden, off-road parking.

Council Tax band: B

Tenure: Freehold

EPC Energy Efficiency Rating: C

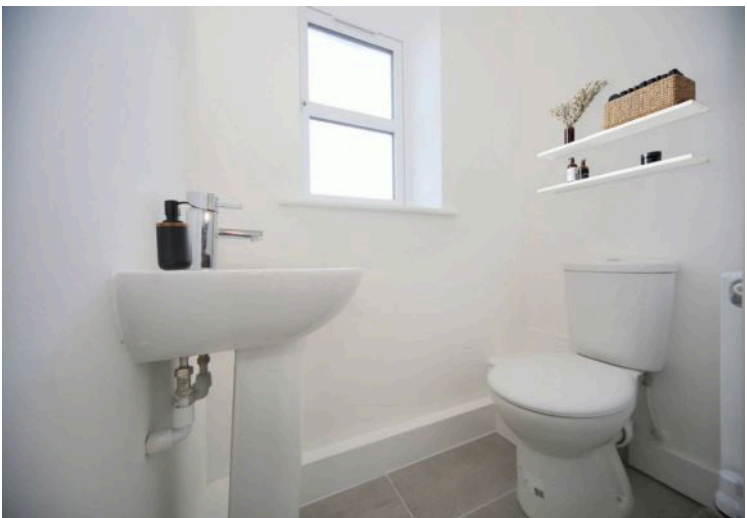
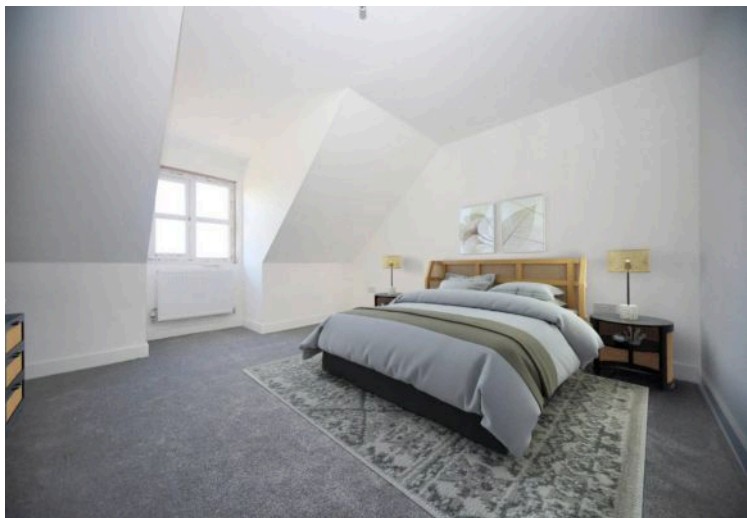
EPC Environmental Impact Rating: C



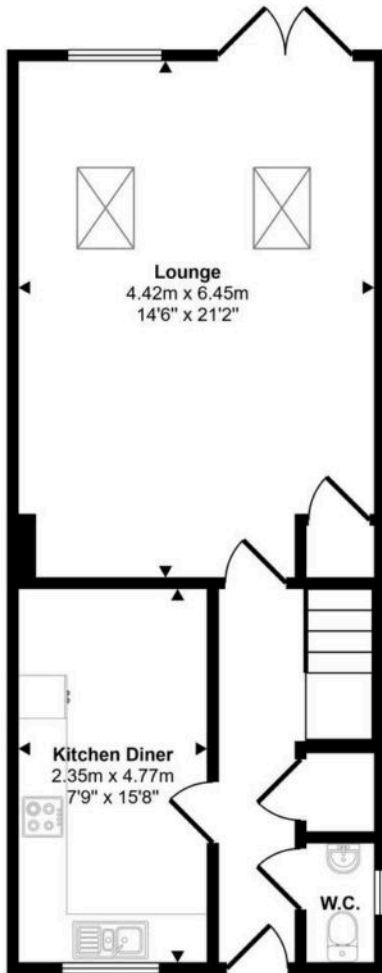
- Four-bedroom end-terrace on Mill Street.
- Driveway parking.
- Kitchen/diner, lounge with French doors.
- Downstairs WC.
- Three bedrooms, family bathroom.
- Master suite with en-suite, dressing room, attic windows, and large garden.
- Freehold
- EPC - C
- Council Tax Band - B



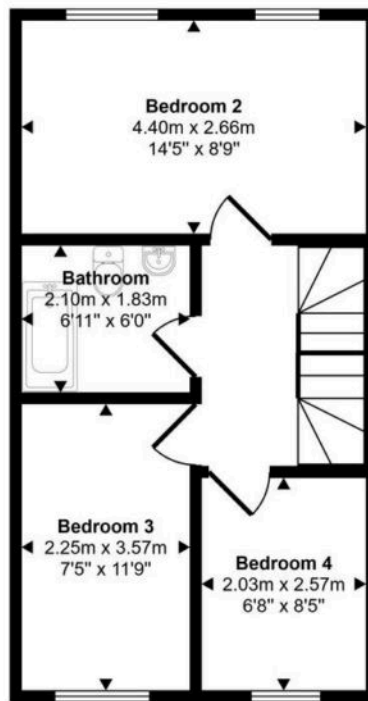




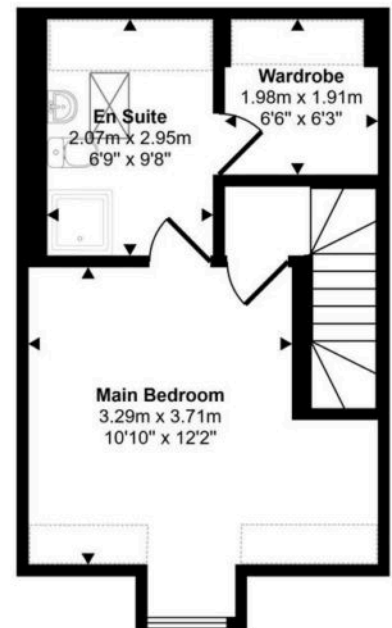
Approx Gross Internal Area  
117 sq m / 1259 sq ft




Ground Floor  
Approx 50 sq m / 536 sq ft



First Floor  
Approx 37 sq m / 396 sq ft



Second Floor  
Approx 30 sq m / 328 sq ft

 Denotes head height below 1.5m

This floorplan is only for illustrative purposes and is not to scale. Measurements of rooms, doors, windows, and any items are approximate and no responsibility is taken for any error, omission or mis-statement. Icons of items such as bathroom suites are representations only and may not look like the real items. Made with Made Snappy 360.

You can include any text here. The text can be modified upon generating your brochure.