

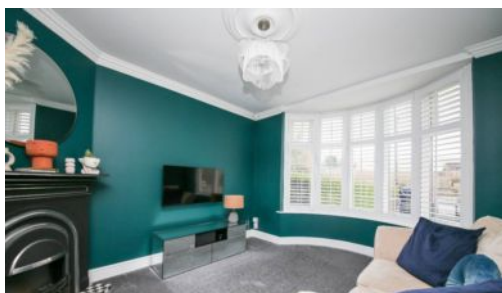
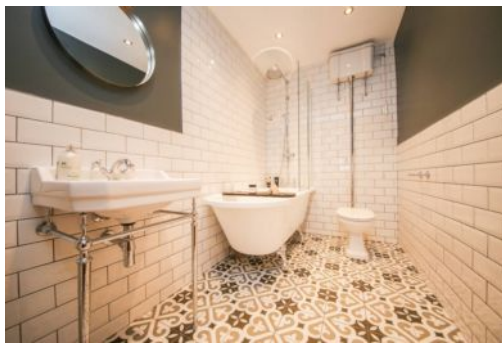
290 Orrell Road, Orrell
Leasehold

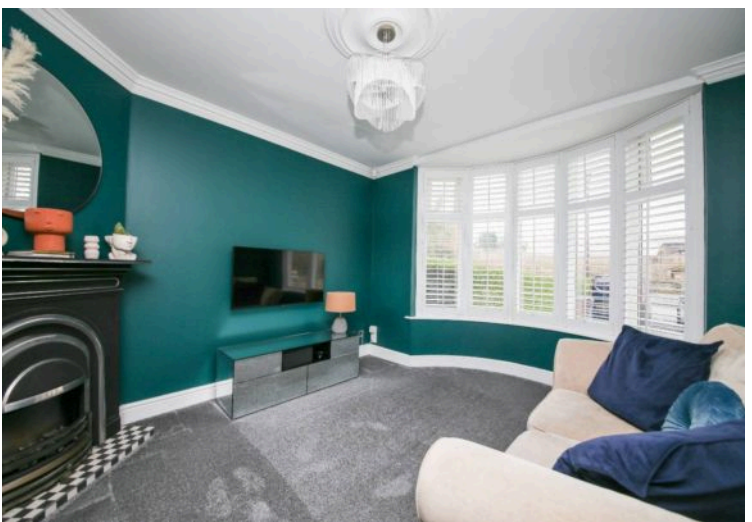
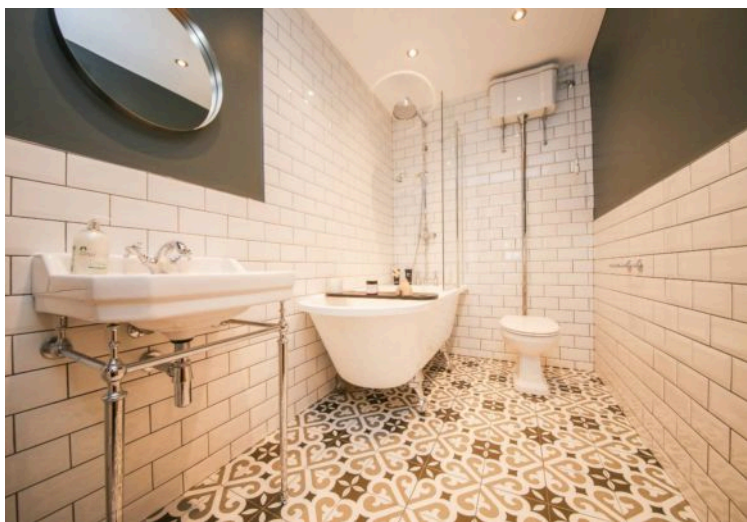
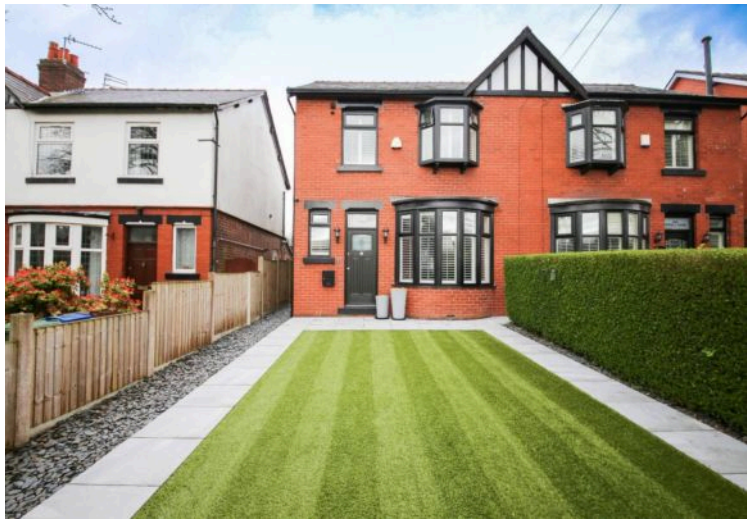
Council Tax band: C

Tenure: Leasehold

EPC Energy Efficiency Rating: C

EPC Environmental Impact Rating: D

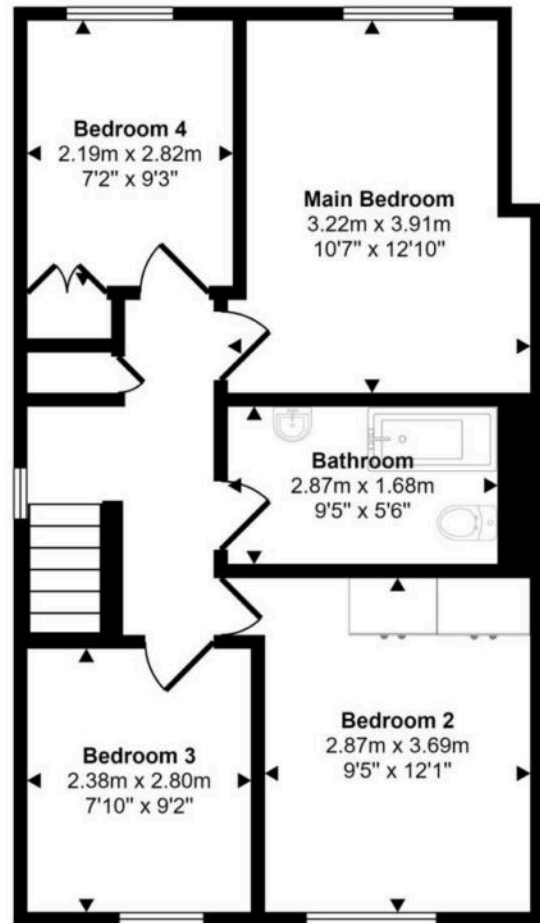




Approx Gross Internal Area
115 sq m / 1238 sq ft



Ground Floor
Approx 65 sq m / 697 sq ft



First Floor
Approx 50 sq m / 541 sq ft

This floorplan is only for illustrative purposes and is not to scale. Measurements of rooms, doors, windows, and any items are approximate and no responsibility is taken for any error, omission or mis-statement. Icons of items such as bathroom suites are representations only and may not look like the real items. Made with Made Snappy 360.

You can include any text here. The text can be modified upon generating your brochure.