



6 Chiswell Street, Wigan

£175,000 Leasehold

Two-bed semi-detached dormer bungalow • Modern separate lounge • Spacious open-plan kitchen/diner • Two large bedrooms with built-in wardrobes • Low-maintenance garden & driveway • Close to schools, shops & parks • Leasehold • EPC - TBC • Council Tax Band - B

Beautifully maintained 2-bed semi-detached dormer bungalow on Chiswell Street, Pemberton. Modern interiors, spacious living, close to amenities & schools. Move-in ready with low-maintenance garden.

Council Tax band: B

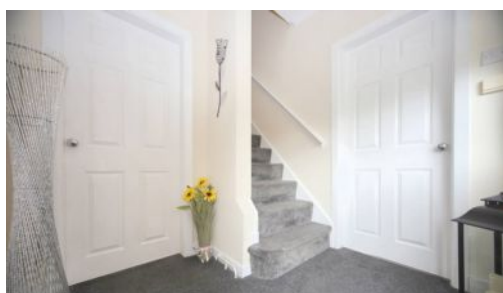
Tenure: Leasehold

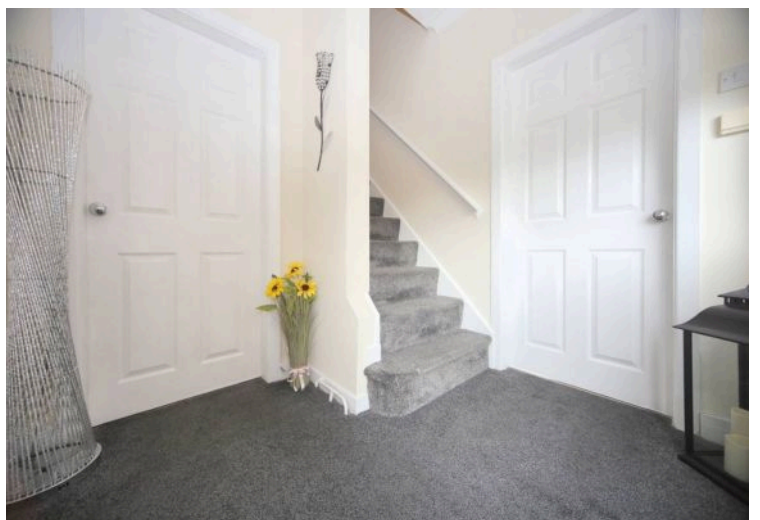
EPC Energy Efficiency Rating: D

EPC Environmental Impact Rating: E

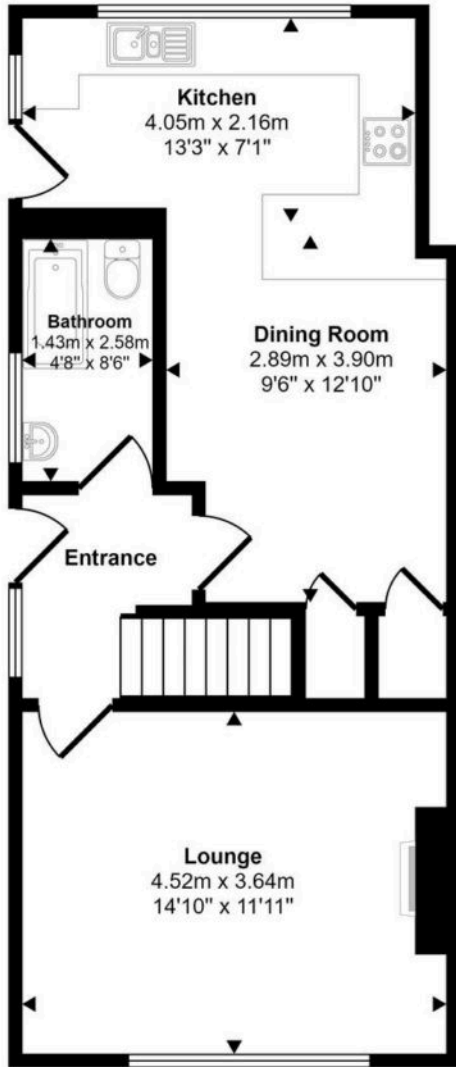


- Two-bed semi-detached dormer bungalow
- Modern separate lounge
- Spacious open-plan kitchen/diner
- Two large bedrooms with built-in wardrobes
- Low-maintenance garden & driveway
- Close to schools, shops & parks
- Leasehold
- EPC - TBC
- Council Tax Band - B

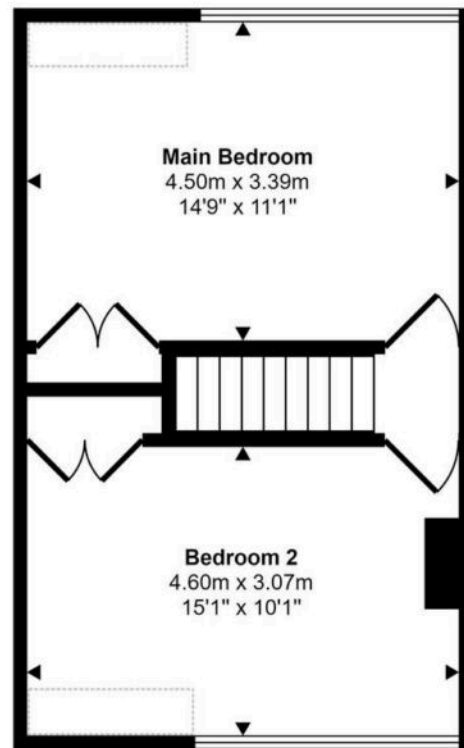




Approx Gross Internal Area
82 sq m / 886 sq ft



Ground Floor
Approx 48 sq m / 514 sq ft



First Floor
Approx 35 sq m / 372 sq ft

Denotes head height below 1.5m

This floorplan is only for illustrative purposes and is not to scale. Measurements of rooms, doors, windows, and any items are approximate and no responsibility is taken for any error, omission or mis-statement. Icons of items such as bathroom suites are representations only and may not look like the real items. Made with Made Snappy 360.

You can include any text here. The text can be modified upon generating your brochure.