

Plot 1, 64, Kirkless Street, Aspull

£300,000 Freehold

Situated in the popular area of Aspull • New build semi-detached property • Spread across three floors •
Property features solar panels • Downstairs W.C • Driveway • EPC rating - A • Council tax band - TBC

Immaculate 3-bed semi in Aspull offers modern living over 3 floors. Solar panels & contemporary finishes. Perfect for eco-conscious buyers.
Council Tax band: TBD

Tenure: Freehold

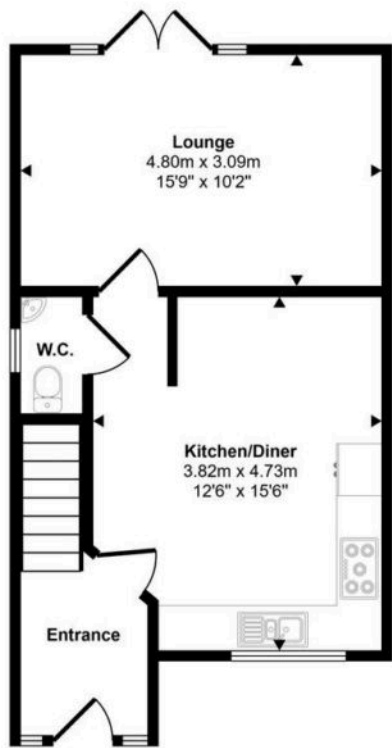


- Situated in the popular area of Aspull
- New build semi-detached property
- Spread across three floors
- Property features solar panels
- Downstairs W.C
- Driveway
- EPC rating - A
- Council tax band - TBC

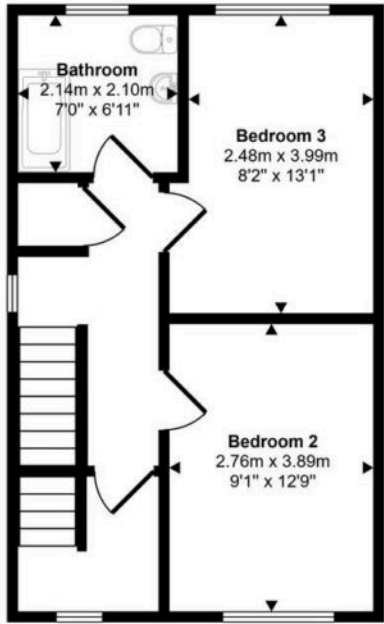




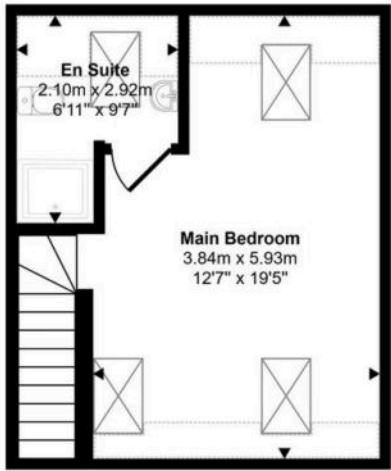
Approx Gross Internal Area
108 sq m / 1160 sq ft



Ground Floor
Approx 40 sq m / 435 sq ft



First Floor
Approx 38 sq m / 412 sq ft



Second Floor
Approx 29 sq m / 313 sq ft

Denotes head height below 1.5m

This floorplan is only for illustrative purposes and is not to scale. Measurements of rooms, doors, windows, and any items are approximate and no responsibility is taken for any error, omission or mis-statement. Icons of items such as bathroom suites are representations only and may not look like the real items. Made with Made Snappy 360.

You can include any text here. The text can be modified upon generating your brochure.