

27 Woodford Street, Wigan

£160,000 Leasehold

Three bedroom end terrace • Log burner in the front reception room • Two reception rooms • The back windows are only 2 years old • Large modern fitted kitchen • Extended at the back • Family bathroom newly renovated • Large low maintenance back garden, not overlooked • Close by to amenities, shops, schools and motorway links • Well presented and looked after

Charming 3-bed end-terrace with log burner, modern kitchen, renovated bathroom, and spacious garden. Conveniently located with amenities nearby. Ideal family home, book a viewing today!

Council Tax band: A

Tenure: Leasehold

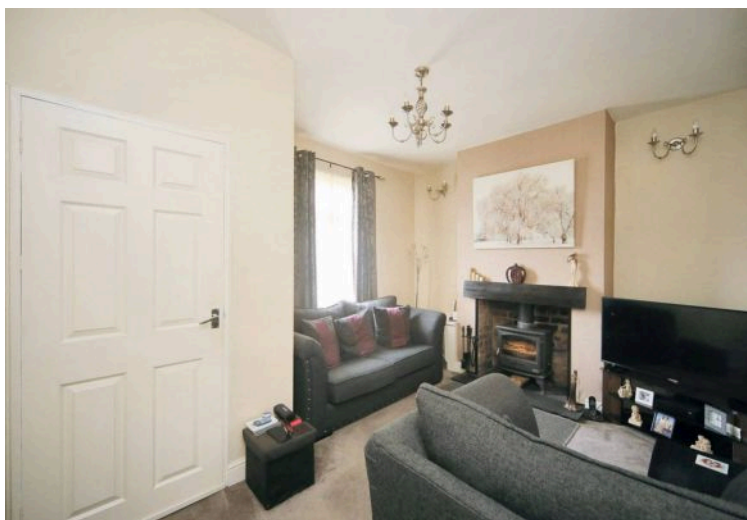
EPC Energy Efficiency Rating: C

EPC Environmental Impact Rating: C

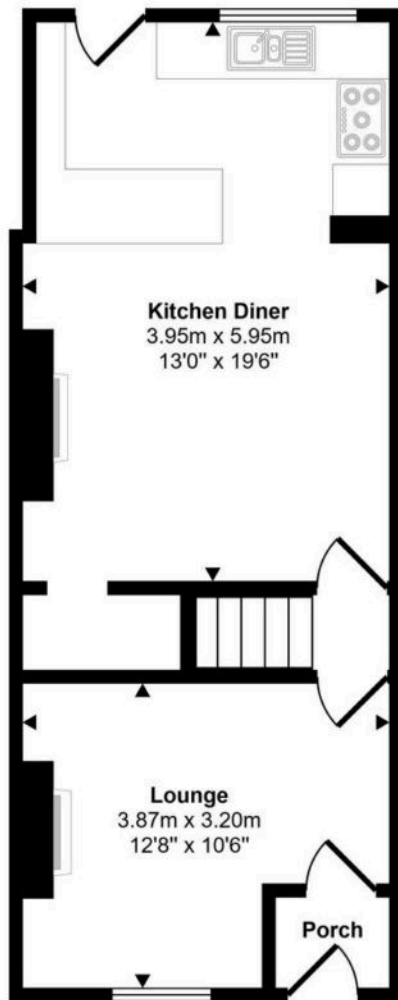


- Three bedroom end terrace
- Log burner in the front reception room
- Two reception rooms
- The back windows are only 2 years old
- Large modern fitted kitchen
- Extended at the back
- Family bathroom newly renovated
- Large low maintenance back garden, not overlooked
- Close by to amenities, shops, schools and motorway links
- Well presented and looked after

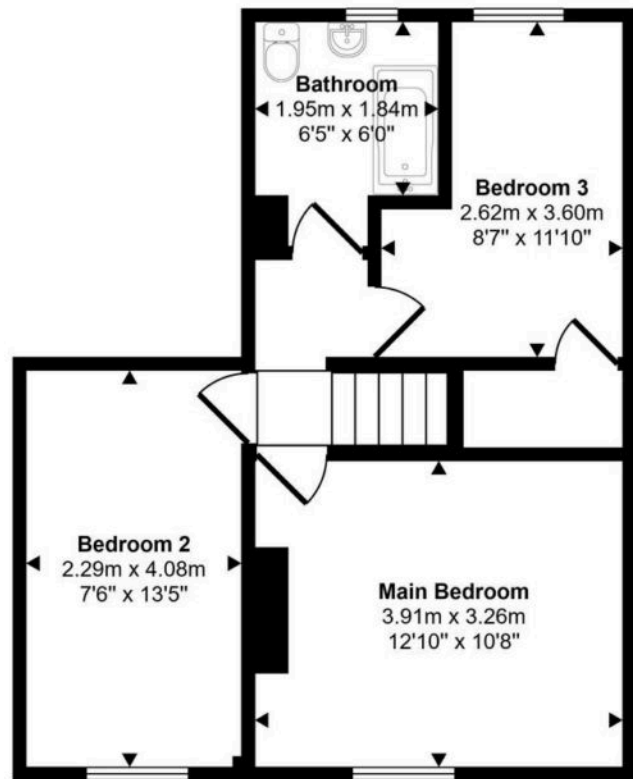




Approx Gross Internal Area
81 sq m / 876 sq ft



Ground Floor
Approx 40 sq m / 431 sq ft



First Floor
Approx 41 sq m / 445 sq ft

This floorplan is only for illustrative purposes and is not to scale. Measurements of rooms, doors, windows, and any items are approximate and no responsibility is taken for any error, omission or mis-statement. Icons of items such as bathroom suites are representations only and may not look like the real items. Made with Made Snappy 360.

You can include any text here. The text can be modified upon generating your brochure.