



De Trafford House Hemfield Road, Ince

£1,000,000 Freehold

Unique detached property with great potential • 13 acres of land • Impressive 2727 sqft • Three double bedrooms with an en suite to master and second bedroom • Tranquil setting with stunning views • Perfect for a family • Double garage • Equestrian-Friendly Property • Freehold/ Council tax band D • EPC - F

Discreetly tucked away with own private driveway & detached garage, De Trafford House sits on 13 acres of land w/ 2727 sq.ft. Unique 3-bed detached property incl 13 acres. Selling for £1,000,000 set in tranquil location, perfect for equestrian or agricultural use. Luxury home with versatile reception rooms, modern amenities, & scenic views, near greenbelt land. Ideal for luxury living with natural scenery, spacious interiors, & modern fixtures.

Council Tax band: D

Tenure: Freehold

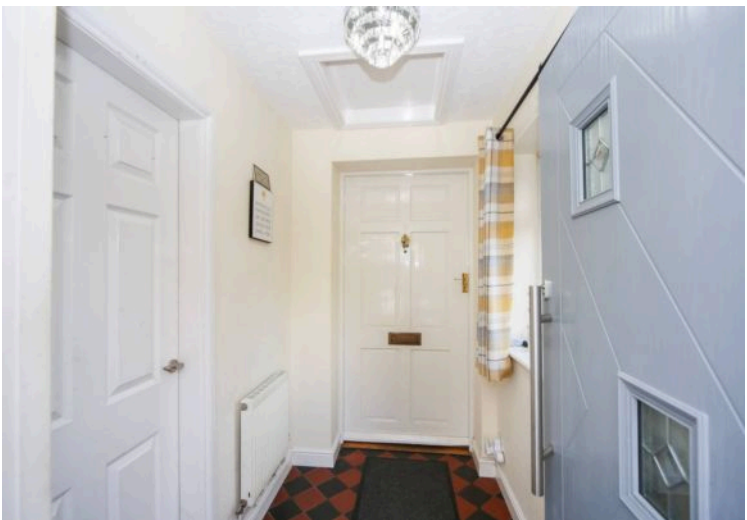
EPC Energy Efficiency Rating: F

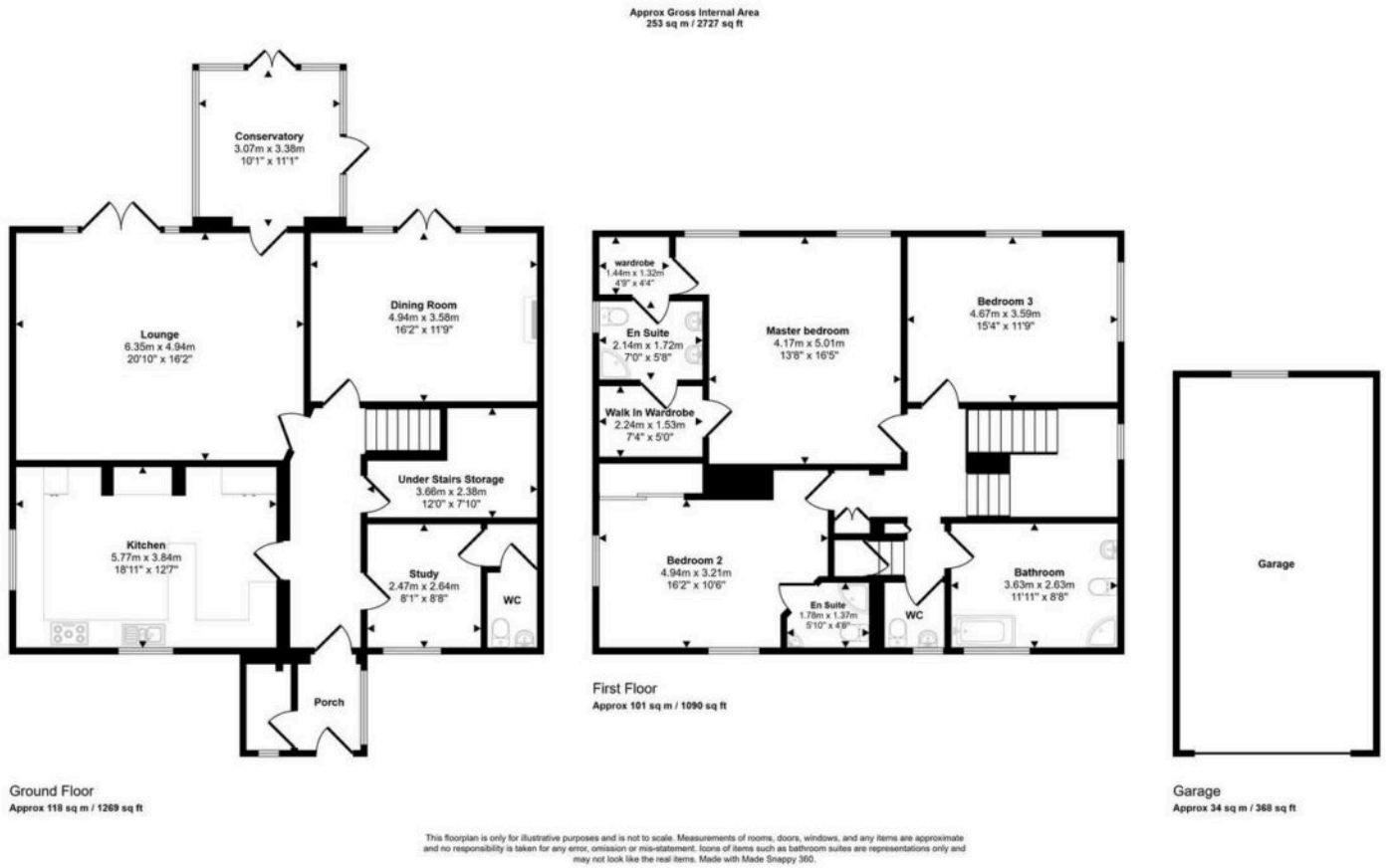
EPC Environmental Impact Rating: F



- Unique detached property with great potential
- 13 acres of land
- Impressive 2727 sqft
- Three double bedrooms with an en suite to master and second bedroom
- Tranquil setting with stunning views
- Perfect for a family
- Double garage
- Equestrian-Friendly Property
- Freehold/ Council tax band D
- EPC - F







You can include any text here. The text can be modified upon generating your brochure.