



799 and 801, Atherton Road, Hindley Green

£190,000 Leasehold

Two houses knocked into one spacious end-terrace • Sought-after Atherton Road, Hindley location • Four bedrooms, master with WC • Two front reception rooms plus large rear living/dining area • Kitchen, utility, WC and shower room • Garage, private yard and communal yard • Council tax band- B • EPC- D • Leasehold

Spacious end-terrace on Atherton Road with four bedrooms, multiple reception rooms, kitchen, utility, two WCs, shower, garage, private yard, and communal yard. Ideal for large families.

Council Tax band: B

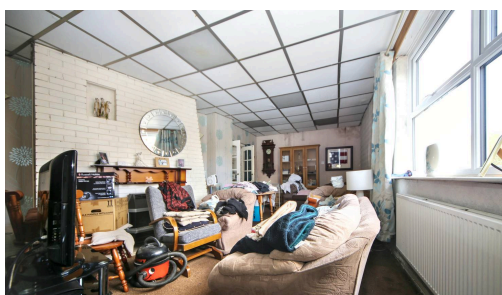
Tenure: Leasehold

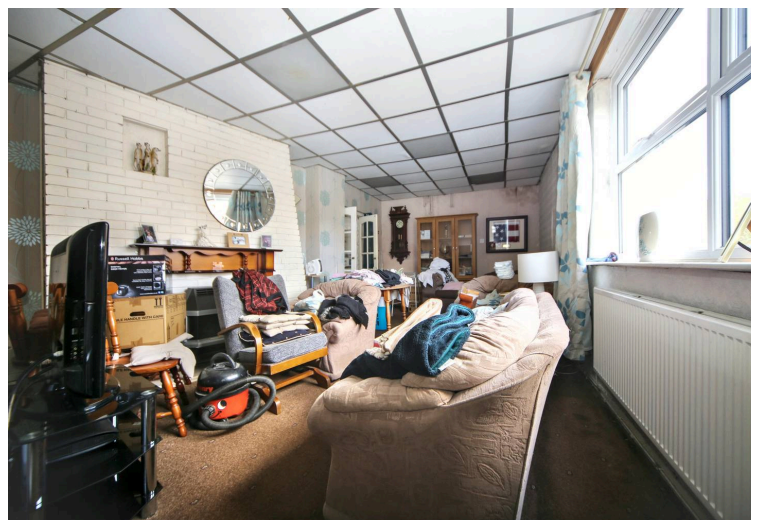
EPC Energy Efficiency Rating: D

EPC Environmental Impact Rating: E

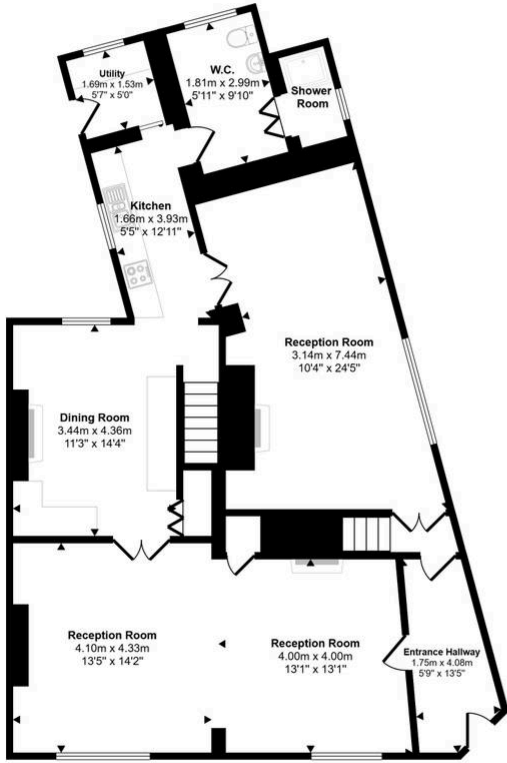


- Two houses knocked into one spacious end-terrace
- Sought-after Atherton Road, Hindley location
- Four bedrooms, master with WC
- Two front reception rooms plus large rear living/dining area
- Kitchen, utility, WC and shower room
- Garage, private yard and communal yard
- Council tax band- B
- EPC- D
- Leasehold

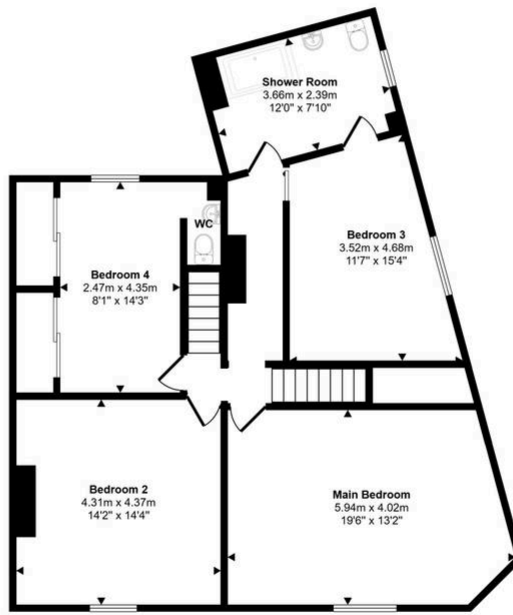




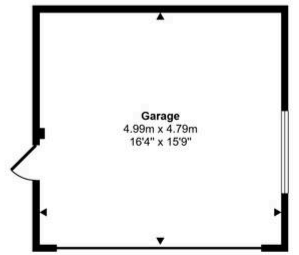
Approx Gross Internal Area
230 sq m / 2471 sq ft



Ground Floor
Approx 112 sq m / 1201 sq ft



First Floor
Approx 94 sq m / 1012 sq ft



Garage
Approx 24 sq m / 258 sq ft

This floorplan is only for illustrative purposes and is not to scale. Measurements of rooms, doors, windows, and any items are approximate and no responsibility is taken for any error, omission or mis-statement. Icons of items such as bathroom suites are representations only and may not look like the real items. Made with Snappy 360.

You can include any text here. The text can be modified upon generating your brochure.