



23 Ratcliffe Road, Aspall

£180,000 Freehold

Spacious three-bedroom terraced home on Ratcliffe Road • Two reception rooms with open-plan kitchen • Separate utility room • Rear yard with decking area and brick shed • Three good-sized bedrooms and large family bathroom • In need of modernisation with excellent potential and great location • Council tax band-B • EPC-D • Freehold

Spacious three-bed terrace on Ratcliffe Road with two receptions, utility, enclosed yard, front garden, and on-street parking. Close to shops, parks, schools, and transport. Ideal for families or investors.

Council Tax band: B

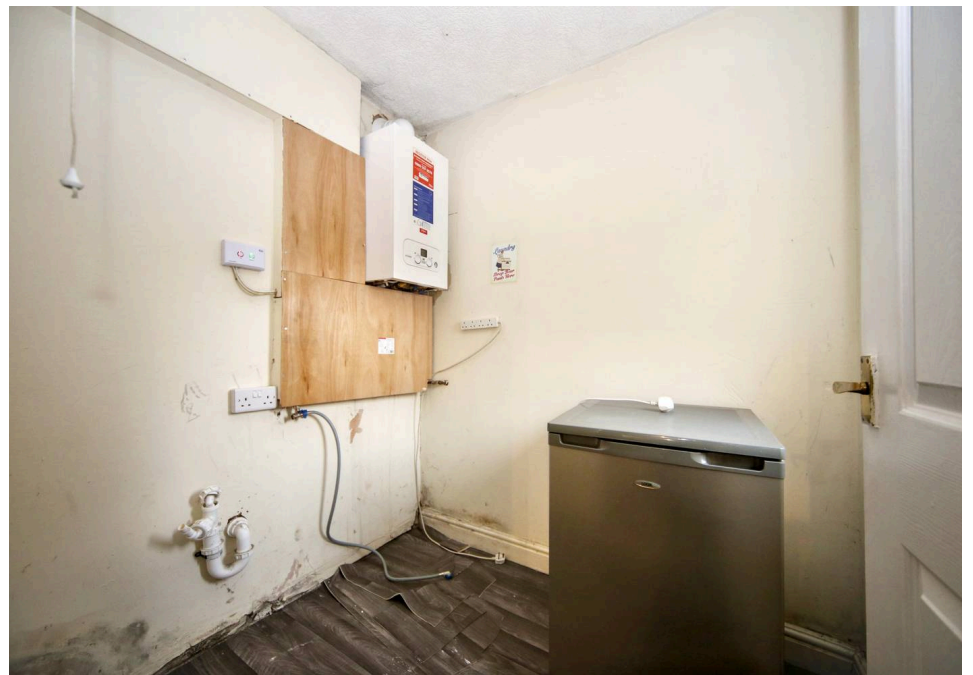
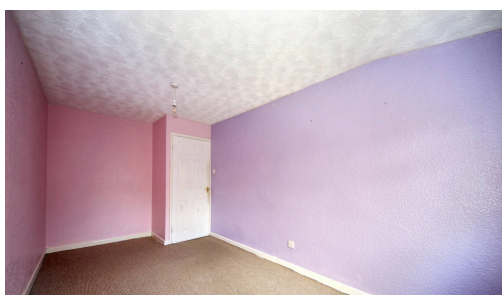
Tenure: Freehold

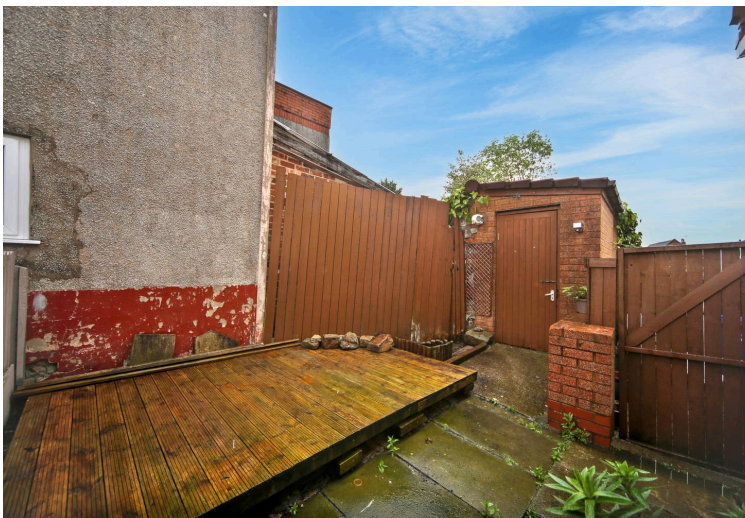
EPC Energy Efficiency Rating: D

EPC Environmental Impact Rating: D

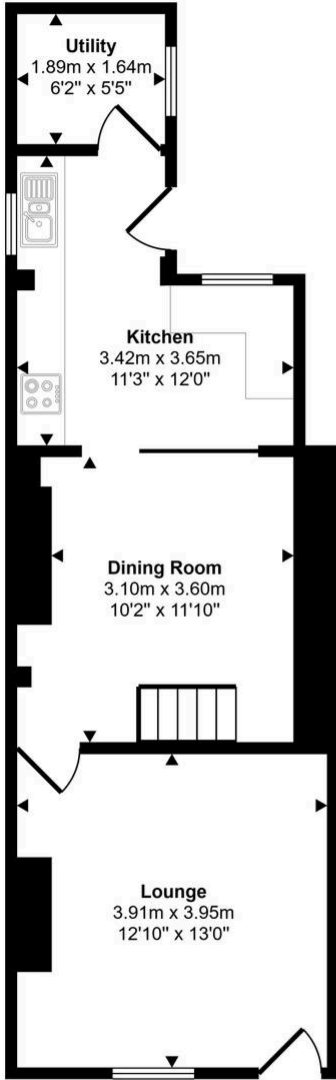


- Spacious three-bedroom terraced home on Ratcliffe Road
- Two reception rooms with open-plan kitchen
- Separate utility room
- Rear yard with decking area and brick shed
- Three good-sized bedrooms and large family bathroom
- In need of modernisation with excellent potential and great location
- Council tax band-B
- EPC-D
- Freehold

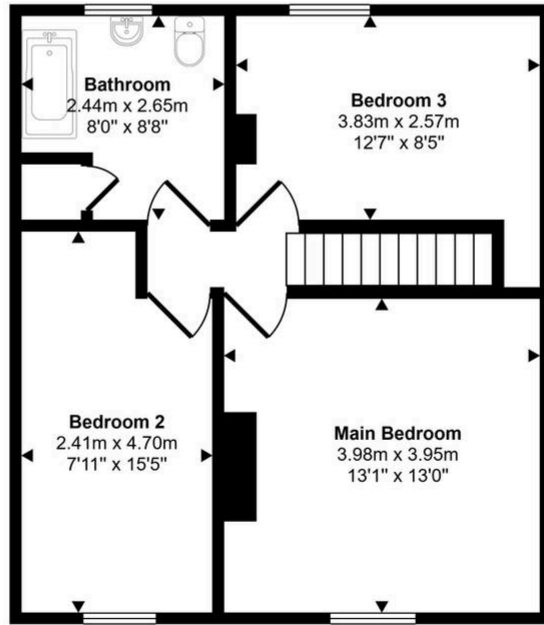




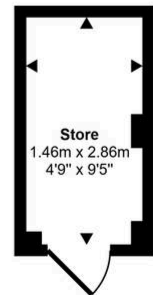
Approx Gross Internal Area
96 sq m / 1035 sq ft



Ground Floor
Approx 44 sq m / 473 sq ft



First Floor
Approx 48 sq m / 517 sq ft



Store
Approx 4 sq m / 45 sq ft

This floorplan is only for illustrative purposes and is not to scale. Measurements of rooms, doors, windows, and any items are approximate and no responsibility is taken for any error, omission or mis-statement. Icons of items such as bathroom suites are representations only and may not look like the real items. Made with Made Snappy 360.

You can include any text here. The text can be modified upon generating your brochure.